



Residential & Commercial CATALOG 2024



www.airconint.com



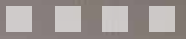
Index

| | |
|--------------------------------|----|
| About Us | 3 |
| Single Zone Ductless. | 4 |
| Blue Hyper Series | 5 |
| Blue 4 Series | 7 |
| Serene Series | 9 |
| Eclipse Series | 11 |
| Titanium Series | 13 |
| Sky Pro Series | 15 |
| Multi Split Ductless. | 17 |
| Multi Split Series | 19 |
| Ducted Units | 23 |
| SD Premium | 25 |
| Saturn TD Inverter. | 27 |
| Saturn Front Return | 29 |
| Saturn Top Discharge | 31 |
| Package Units. | 33 |
| PTAC. | 35 |
| APV Rooftop | 37 |
| Accessories. | 39 |
| VRF Systems | 41 |
| Export Only Products | 43 |
| Factory Warranty | 44 |

About Us

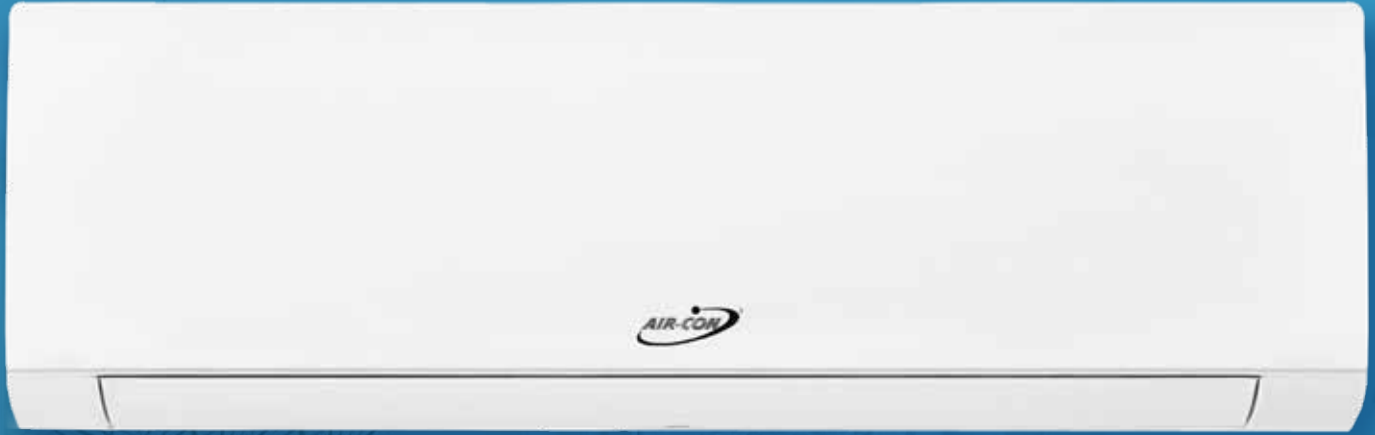
Air-Con International has been providing quality air-conditioning products for residential and commercial customers since 2002. We are experienced in ductless & beyond! With over 20 years of industry experience, Air-Con air-conditioning systems have been crafted to meet and exceed industry standards. Our products are AHRI certified and a variety are Energy Star certified. Our stores and network of dealers provide easy access to Air-Con products anywhere within the contiguous United States. International products for export only to the Caribbean and Latin America are also available.





Single Zone Ductless





Up to 26 SEER2 • From 9K to 24K BTU



Hyper Heat

This hyper heat pump unit can continue heating in -22 degrees Fahrenheit.



WiFi Enabled

Wi-fi capabilities are built in and ready to go. No need for extra accessories to directly connect with compatible apps.



Warranty

Each unit has 5 years for parts and 7 years for the compressor. Warranty registration is required.

www.airconint.com

5



Blue Hyper Series



Specs

| Model Number | | Unit | ABHCI4H4S09 ABHEM4H4S09 | ABHCI4H4S12 ABHEM4H4S12 | ABHCI4H4S18 ABHEM4H4S18 | ABHCI4H4S24 ABHEM4H4S24 |
|--------------------------------|----------------------------------|---------|----------------------------|----------------------------|----------------------------|----------------------------|
| Power Supply | | Ph-V-Hz | 208-230V~ 60Hz, 1Ph | 208-230V~ 60Hz, 1Ph | 208/230V,1Ph,60Hz | 208-230V~ 60Hz, 1Ph |
| Cooling | Capacity: Rated (Min/Max) | Btu/h | 9000 (3000~12000) | 12000 (3000~14000) | 18000(4500~20000) | 24000 (5500~25000) |
| | Input | W | 620 | 940 | 1360 | 1920 |
| | Rated Current | A | 2.8 | 4.3 | 6.0 | 8.5 |
| | EER2 | Btu/w | 14.5 | 12.7 | 13.0 | 12.5 |
| | SEER2 | Btu/w | 25.5 | 23.5 | 20.5 | 21.0 |
| Heating at 47°F | Capacity: Rated (Min/Max) | Btu/h | 10000 (3000~14000) | 12000 (3000~16000) | 19000 (5500~23000) | 26000 (6000~27000) |
| | Input | W | 720 | 940 | 1620 | 2500 |
| | Rated Current | A | 3.2 | 4.3 | 7.2 | 11.2 |
| | COP | W/W | 4.07 | 3.74 | 3.51 | 3.05 |
| | HSPF1 4 | Btu/w | 12 | 11 | 10.5 | 11.50 |
| HSPF2 4 | Btu/w | 10.5 | 9.5 | 9.5 | 10 | |
| Heating at 17°F | Rated Heating Capacity (Min-Max) | Btu/h | 5500(4500~9500) | 6800(5000~11500) | 10500(8000~17500) | 15500(10000~21000) |
| -15 °C (5 °F) | Rated Heating Capacity (Min-Max) | Btu/h | 7000(4000~8600) | 8400(5000~10000) | 13300(8000~15500) | 18200(10000~22800) |
| -20 °C (-5 °F) | Heating Capacity | Btu/h | 8500 | 9500 | 15000 | 19500 |
| -25 °C (-13 °F) | Heating Capacity | Btu/h | 7000 | 7500 | 14000 | 15000 |
| -30 °C (-22 °F) | Heating Capacity | Btu/h | 4000~5500 | 5000~6000 | 9000~12000 | 10000~15000 |
| Indoor Air Flow (H/M/L) | | m3/h | 620 / 520 / 430 | 640 / 550 / 430 | 950 / 800 / 650 | 1200 / 1100 / 950 |
| Indoor Air Flow (H/M/L) | | CFM | 365 / 306 / 253 | 377 / 324 / 253 | 559 / 470 / 382 | 706 / 647 / 559 |
| Indoor Noise Level (H/M/L) | | dB(A) | 42/39/35/32/29 | 42/40/36/32/29 | 48/45/41/39/35 | 53/50/47/45/42 |
| Indoor Unit | Dimension(W*D*H) | inch | 33 1/2x10 5/8 x8 1/8 | 33 1/2x10 5/8 x8 1/8 | 44 1/2x 12 3/8x8 15/16 | 50 3/8x14 3/16x10 1/4 |
| | Packing (W*D*H) | inch | 35 7/16x13 3/16x10 2/8 | 35 7/16x13 3/16x10 2/8 | 47x12 3/16x14 | 54 1/2x17 1/8x12 13/16 |
| | Net/Gross Weight | lbs. | 18.7/23.1 | 18.7/23.1 | 29.7/35.2 | 40.12/50.26 |
| Outdoor Air Flow | | m3/h | 1900 | 1900 | 2350 | 4000 |
| Outdoor Air Flow | | CFM | 1120 | 1120 | 1382 | 2355 |
| Outdoor Noise Level | | dB(A) | 53 | 53 | 58 | 61 |
| Outdoor Unit | Dimension(W*D*H) | inch | 31 7/8x11x23 | 31 7/8x11x23 | 33 7/8x12 1/4x25 5/8 | 35 3/8x13 1/2x29 1/2 |
| | Packing (W*D*H) | inch | 37x15 3/16x25 3/16 | 37x15 3/16x25 3/16 | 39 1/8x17 1/2 x28 3/4 | 41 3/4x17 3/4 x32 1/4 |
| | Net/Gross Weight | lbs. | 72.6/79.2 | 72.6/79.2 | 101.2/110 | 132/140.8 |
| | Refrigerant Type | | R410A | R410A | R410A | R410A |
| Refrigerant Precharge | | g | 20 | 20 | 20 | 30 |
| Additional Charge For Each Ft. | | oz | 0.161 | 0.161 | 0.161 | 0.322 |
| Max. Refrigerant Pipe Length | | ft | 66 | 66 | 66 | 66 |
| Max. Difference In Level | | ft | 33 | 33 | 33 | 33 |

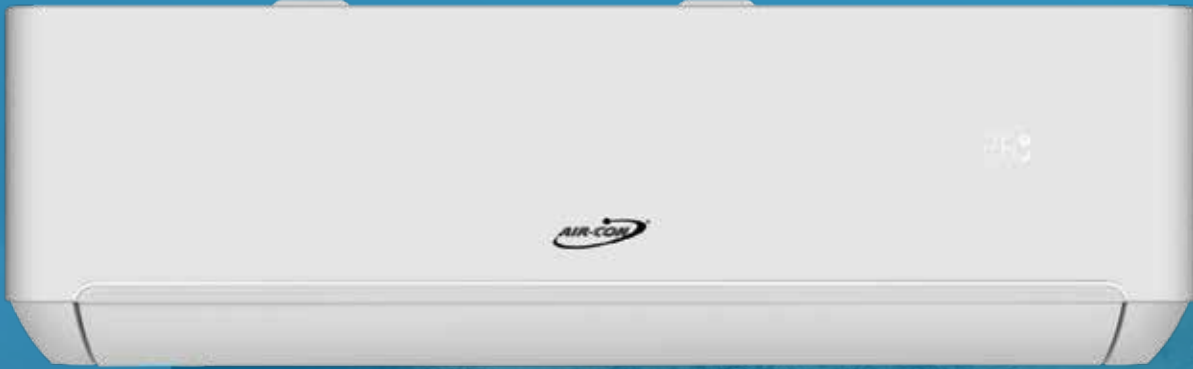


Warranty registration is required.



BLUE 4

Series



Up to 24 SEER • From 9K to 24K BTU • 115v & 220v



Heat & Cool

Enjoy year round comfort with the ability to heat or cool your room or space. Can continue to heat in low ambient temperatures as low as -13 degrees Fahrenheit.



Inverter

Inverter Technology

Units that use Inverter technology are more energy efficient than traditional ACs. This energy efficiency translates to extended unit life, quiet operation, and lower electricity bills.



Warranty

Each unit has 5 years for parts and 7 years for the compressor. Warranty registration is required.

www.airconint.com

7



Blue 4 Series



Specs

| Model | | ODU IDU | ALPCI4H1E09 ALPEM4H1E09 | ALPCI4H1E12 ALPEM4H1E12 | ALPCI4H4E09 ALPEM4H4E09 | ALPCI4H4E12 ALPEM4H4E12 | ALPCI4H4E18 ALPEM4H4E18 | ALPCI4H4E24 ALPEM4H4E24 |
|--|-----------------------------------|--------------|----------------------------|----------------------------|----------------------------|----------------------------|----------------------------|----------------------------|
| Power supply | | V/Hz/PH | 115V~60Hz/1P | | | 208/230V~60Hz/1P | | |
| Rated Cooling (95F/35C) | Rated cooling capacity | Btu/h | 9000 | 12000 | 9000 | 12000 | 18000 | 23000 |
| | EER2 | Btu/W.h | 12.5 | 12.5 | 13.0 | 13.0 | 13.0 | 12.5 |
| | SEER2 | Btu/W.h | 23.0 | 22.0 | 23.5 | 23.0 | 22.0 | 20.0 |
| Rated Heating | Rated Heating capacity(47F/8.3C) | Btu/h | 9500 | 12000 | 9500 | 12000 | 18000 | 24000 |
| | Rated Heating capacity(17F/-8.3C) | Btu/h | 6000 | 7500 | 6000 | 7500 | 10000 | 14000 |
| | Max. Heating capacity(19F/-7C) | Btu/h | 8000 | 10000 | 8000 | 10000 | 14000 | 18000 |
| | Max. Heating capacity(5F/-15C) | Btu/h | 7000 | 8700 | 7300 | 9100 | 11900 | 16000 |
| | HSPF2 (Region IV) | Btu/W.h | 9.0 | 9.0 | 9.2 | 9.5 | 8.8 | 8.8 |
| | HSPF2 (Region V) | Btu/W.h | 7.8 | 7.8 | 7.9 | 8.2 | 7.6 | 7.6 |
| | COP2 | W/W | 3.5 | 3.5 | 3.5 | 3.5 | 3.5 | 3.2 |
| | COP (5 F/-15 C) | W/W | 1.75 | 1.75 | 1.75 | 1.75 | 1.75 | 1.75 |
| Rated Input Consumption | Cooling | W | 710 | 920 | 710 | 920 | 1350 | 1920 |
| | Heating | W | 730 | 910 | 730 | 910 | 1310 | 2050 |
| Rated Current | Cooling | A | 6.4 | 8.2 | 3.2 | 4.1 | 6.1 | 8.6 |
| | Heating | A | 6.5 | 8.2 | 3.3 | 4.1 | 5.9 | 9.2 |
| Indoor airflow | 1cfm≈1.7m3/h | CFM | 382/324/265 | 471/382/294 | 382/324/265 | 471/382/294 | 735/618/529 | 735/618/529 |
| Indoor noise level at cooling | Turbo/High/Med./Low/Mute | | 42/39/34/29/27 | 45/39/34/29/27 | 42/39/34/29/27 | 45/39/34/29/27 | 48/45/40/35/31 | 51/48/43/38/35 |
| Outdoor airflow | | m3/h | 2100 | 2100 | 2100 | 2100 | 3300 | 4500 |
| | 1cfm≈1.7m3/h | CFM | 1235 | 1235 | 1235 | 1235 | 1941 | 2647 |
| Outdoor noise level | | dB(A) | 50 | 52 | 50 | 52 | 52 | 58 |
| Connecting Pipe | Gas | inches | 3/8" | 3/8" | 3/8" | 3/8" | 1/2" | 5/8" |
| | Liquid | inches | 1/4" | 1/4" | 1/4" | 1/4" | 1/4" | 1/4" |
| Net dimensions (W x D x H) | Indoor | inch | 32.28×12.05×7.68 | 36.22×12.05×7.68 | 32.28×12.05×7.68 | 36.22×12.05×7.68 | 43.31×13.11×8.74 | 43.31×13.11×8.74 |
| | Outdoor | inch | 28.66×12.01×21.65 | 28.66×12.01×21.65 | 28.66×12.01×21.65 | 28.66×12.01×21.65 | 33.26×14.96×27.51 | 35.83×15.63×31.69 |
| Net weight | Indoor | lbs | 19.8 | 23.1 | 19.8 | 23.1 | 30.9 | 30.9 |
| | Outdoor | lbs | 51.8 | 60.4 | 51.4 | 59.1 | 84.9 | 104.7 |
| Indoor Packing dimensions (W x D x H) | | inch | 35.04×14.96×10.43 | 38.98×14.96×10.43 | 35.04×14.96×10.43 | 38.98×14.96×10.43 | 45.87×15.95×11.61 | 45.87×15.95×11.61 |
| Outdoor Packing dimensions (W x D x H) (without pipe with less accessory parts) | | inch | 33.07×13.39×23.82 | 33.07×13.39×23.82 | 33.07×13.39×23.82 | 33.07×13.39×23.82 | 37.79×16.92×29.53 | 40.47×19.09×33.46 |
| Gross weight without pipe | Indoor | lbs | 24.3 | 26.5 | 24.3 | 26.5 | 35.3 | 35.3 |
| | Outdoor | lbs | 56.2 | 65.5 | 55.8 | 64.4 | 93.7 | 119.0 |
| Outdoor Packing dimensions (W x D x H) (with 5m pipe) | | inch | 33.54×14.09×24.02 | 33.54×14.09×24.02 | 33.54×14.09×24.02 | 33.54×14.09×24.02 | 37.79×16.92×29.53 | 40.47×19.09×33.46 |
| Gross weight with 5m pipe | Outdoor | lbs | 60.6 | 69.9 | 60.2 | 68.8 | 98.1 | 125.7 |
| Refrigerant | | Type | R410a | R410a | R410a | R410a | R410a | R410a |
| | 1oz=28.35g | ozs | 27.51 | 42.33 | 27.51 | 42.33 | 50.44 | 65.26 |
| Factory Refrigerant charge(7.5m pipe) | | g/oz | 780g/27.51ozs | 1200g/42.33ozs | 780g/27.51ozs | 1200g/35.27ozs | 1430g/50.44ozs | 1850g/65.26ozs |
| Factory Precharge Line | | (m/ft) | 7.5 / 25 | 7.5 / 25 | 7.5 / 25 | 7.5 / 25 | 7.5 / 25 | 7.5 / 25 |
| Maximum Line Length | | (m/ft) | 15 / 50 | 15 / 50 | 15 / 50 | 15 / 50 | 20 / 65 | 20 / 65 |
| Maximum Height Difference Between Indoor and Outdoor | | (m/ft) | 10 / 33 | 10 / 33 | 10 / 33 | 10 / 33 | 15 / 49 | 15 / 49 |
| Additional refrigerant charge | | (g/m, oz/ft) | 20 / 0.22 | 20 / 0.22 | 20 / 0.22 | 20 / 0.22 | 20 / 0.22 | 20 / 0.22 |



Warranty registration is required.



Serene
series



TOKYO

Up to 18 SEER • From 9K to 24K BTU



Heat & Cool

Enjoy year round comfort with the ability to heat or cool your room or space. Can continue to heat in low ambient temperatures as low as -4 degrees Fahrenheit.

Inverter

Inverter
Technology

Units that use Inverter technology are more energy efficient than traditional ACs. This energy efficiency translates to extended unit life, quiet operation, and lower electricity bills.



Warranty

Each unit has 5 years for parts and 7 years for the compressor. Warranty registration is required.

www.airconint.com

9



Serene Series



Specs

| Model | | Unit | ASRCI4H4S09 ASREM4H4S09 | ASRCI4H4S12 ASREM4H4S12 | ASRCI4H4S18 ASREM4H4S18 | ASRCI4H4S24 ASREM4H4S24 |
|----------------------------|---------------------------------|-----------|----------------------------|----------------------------|----------------------------|----------------------------|
| Power Supply | | V/Ph/Hz | 208-230 / 1 /60 | 208-230 / 1 /60 | 208-230 / 1 /60 | 208-230 / 1 /60 |
| Cooling Capacity (Min-Max) | | Btu/h | 9,000 (4,500-10,000) | 12,000 (5,500-13,500) | 18,000 (6,500-19,500) | 24,000 (8,000-26,500) |
| Heating Capacity (Min-Max) | | Btu/h | 10,000 (4,500-10,000) | 13,000 (5,500-13,500) | 20,000 (6,000-21,500) | 24,500 (8,000-26,500) |
| Cooling Power Input | | W | 820 | 1120 | 1700 | 2290 |
| Heating Power Input | | W | 860 | 1110 | 2000 | 2280 |
| Cooling Current Input | | A | 3.7 | 5 | 7.6 | 10.5 |
| Heating Current Input | | A | 3.9 | 5 | 9 | 10.4 |
| Air Flow Volume | | CFM | 323 | 364 | 588 | 676 |
| Dehumidification Volume | | Pint/h | 1.90 | 2.54 | 4.23 | 5.07 |
| EER | | (Btu/h)/W | 10.98 | 10.71 | 10.59 | 10.48 |
| SEER | | - | 16.3 | 16.7 | 17.6 | 17.6 |
| INDOOR UNIT | Sound Pressure Level (SH/H/M/L) | dB(A) | 39/36/33/26 | 40/36/33/26 | 45/43/38/35 | 48/45/40/36 |
| | Dimension (WxHxD) | inch | 29 5/16 x 10 5/8 x 8 7/16 | 32 1/16 x 10 5/8 x 8 7/16 | 36 x 12 3/8 x 9 5/16 | 42 3/4 x 12 3/8 x 9 5/16 |
| | Package Dimension (WxHxD) | inch | 31 1/2 x 13 3/16 x 10 7/16 | 34 1/4 x 13 3/16 x 10 7/16 | 39 3/8 x 15 3/8 x 12 3/8 | 46 1/16 x 15 3/8 x 12 7/16 |
| | Net Weight | lb | 18.74 | 19.84 | 27.56 | 33.07 |
| | Gross Weight | lb | 22.05 | 24.25 | 31.97 | 37.48 |
| OUTDOOR UNIT | Dimension (WxHxD) | inch | 28 1/8 x 19 x 9 7/16 | 28 1/8 x 19 x 9 7/16 | 31 7/8 x 23 x 11 | 33 7/8 x 25 9/16 x 12 3/16 |
| | Package Dimension (WxHxD) | inch | 32 11/16 x 20 7/8 x 13 3/8 | 32 11/16 x 20 7/8 x 13 3/8 | 37 x 25 3/16 x 15 3/16 | 39 3/16 x 28 3/4 x 17 1/2 |
| | Net Weight | lb | 55.12 | 59.52 | 85.98 | 110.23 |
| | Gross Weight | lb | 59.52 | 66.14 | 92.59 | 119.05 |
| | Refrigerant | - | R410A | R410A | R410A | R410A |
| PIPE CONNECTION | Connection Pipe Length | ft | 15 | 15 | 15 | 15 |
| | Outer Diameter Liquid Pipe | inch | 1/4 | 1/4 | 1/4 | 3/8 |
| | Outer Diameter Gas Pipe | inch | 3/8 | 3/8 | 1/2 | 5/8 |



Warranty registration is required.



ECLIPSE

series



Up to 19 SEER - 30K & 36K BTU



Heat & Cool

Enjoy year round comfort with the ability to heat or cool your room or space. Can continue to heat in low ambient temperatures as low as -4 degrees Fahrenheit.



Inverter
Technology

Units that use Inverter technology are more energy efficient than traditional ACs. This energy efficiency translates to extended unit life, quiet operation, and lower electricity bills.



Warranty

Each unit has 5 years for parts and 7 years for the compressor. Warranty registration is required.



Eclipse Series



Specs

| Model | | Unit | ASPCI4H4S30 ASPEM4H4S30 | ASPCI4H4S36R ASPEM4H4S36R |
|----------------------------|---------------------------------------|-----------|----------------------------|------------------------------|
| Power Supply | | V/Ph/Hz | 208-230V/1Ph/60Hz | |
| Cooling Capacity (Min-Max) | | Btu/h | 30,000 (11,500-33,500) | 35,000 (12,000-37,000) |
| Heating Capacity (Min-Max) | | Btu/h | 31,000 (11,500-33,500) | 35,000 (12,000-38,000) |
| Cooling Power Input | | W | 3,000 | 4,200 |
| Heating Power Input | | W | 2,839 | 3,500 |
| Cooling Current Input | | A | 2.3-15 | 2.5-18.5 |
| Air Flow Volume | | CFM | 1218 | 1353 |
| Dehumidification Volume | | Pint/h | 6.34 | 6.76 |
| EER | | (Btu/h)/W | 10.00 | 8.33 |
| SEER | | - | 18.8 | 16.4 |
| INDOOR UNIT | Sound Pressure Level (H/M/L/S) | dB(A) | 50/45/40/38 | 52/50/45/40 |
| | Dimension (WxHxD) | inch | 50 3/8 x 14 3/16 x 10 1/4 | 50 3/8 x 14 3/16 x 10 1/4 |
| | Package Dimension (WxHxD) | inch | 54 1/2 x 17 1/8 x 12 13/16 | 54 1/2 x 17 1/8 x 12 13/16 |
| | Net Weight | lb | 39.68 | 40.78 |
| | Gross Weight | lb | 47.39 | 48.5 |
| OUTDOOR UNIT | Sound Pressure Level | dB(A) | 60 | 60 |
| | Dimension (WxHxD) | inch | 34 7/8 x 31 5/16 x 14 3/8 | 34 7/8 x 31 5/16 x 14 3/8 |
| | Package Dimension (WxHxD) | inch | 41 11/32 x 35 x 19 11/16 | 41 11/32 x 35 x 19 11/16 |
| | Net Weight | lb | 127.86 | 141.1 |
| | Gross Weight | lb | 138.89 | 152.11 |
| | Refrigerant | - | R410A | R410A |
| PIPE CONNECTION | Refrigerant Charge | oz | 73.00 | 81.13 |
| | Connection Pipe Length | ft | 15 | 15 |
| | Connection Pipe Gas Additional Charge | oz/ft | 0.322 | 0.322 |
| | Outer Diameter Liquid Pipe | inch | 3/8 | 3/8 |
| | Outer Diameter Gas Pipe | inch | 5/8 | 5/8 |
| | Max Distance Height | ft | 16.4 | 16.4 |
| | Max Distance Length | ft | 49.21 | 49.21 |



Warranty registration is required.

TITANIUM[®]

115v



Up to 19 SEER • 9K & 12K BTU • 115v



Heat & Cool

Enjoy year round comfort with the ability to heat or cool your room or space. Can continue to heat in low ambient temperatures as low as -4 degrees Fahrenheit.

Inverter

Inverter
Technology

Units that use Inverter technology are more energy efficient than traditional ACs. This energy efficiency translates to extended unit life, quiet operation, and lower electricity bills.



Warranty

Each unit has 5 years for parts and 7 years for the compressor. Warranty registration is required.



Titanium Series



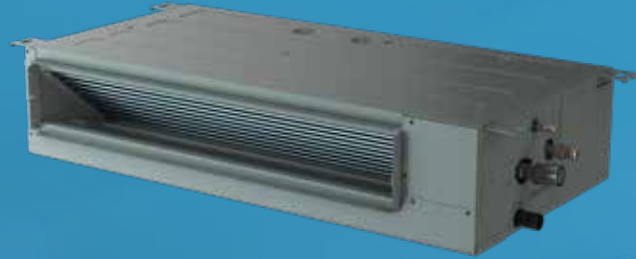
Specs

| Model | | Unit | ATUCI4H1S09 ATUEM4H1S09 | ATUCI4H1S12 ATUEM4H1S12 |
|----------------------------|------------------------------|-----------|----------------------------|----------------------------|
| Power Supply | | V/Ph/Hz | 110-115 / 1 /60 | 110-115 / 1 /60 |
| Cooling Capacity (Min-Max) | | Btu/h | 9,000 (1,200-10,000) | 12,000 (2,500-13,500) |
| Heating Capacity (Min-Max) | | Btu/h | 9,500 (1,200-10,000) | 13,000 (2,500-14,500) |
| Cooling Power Input | | W | 810 | 1200 |
| Heating Power Input | | W | 810 | 1200 |
| Cooling Current Input | | A | 7.4 | 10.8 |
| Heating Current Input | | A | 7.4 | 10.8 |
| Air Flow Volume | | CFM | 323 | 364 |
| Dehumidification Volume | | Pint/h | 1.90 | 2.54 |
| EER | | (Btu/h)/W | 11.11 | 10 |
| SEER | | - | 19 | 18 |
| INDOOR UNIT | Sound Pressure Level (H/M/L) | dB(A) | 39/36/33 | 40/36/33 |
| | Dimension (WxHxD) | inch | 29 5/16 x 10 5/8 x 8 7/16 | 32 1/16 x 10 5/8 x 8 7/16 |
| | Package Dimension (WxHxD) | inch | 31 1/2 x 13 3/16 x 10 7/16 | 34 1/4 x 13 3/16 x 10 7/16 |
| | Net Weight | lb | 18.74 | 19.84 |
| | Gross Weight | lb | 22.05 | 24.25 |
| OUTDOOR UNIT | Dimension (WxHxD) | inch | 28 1/8 x 19 x 9 7/16 | 28 1/8 x 19 x 9 7/16 |
| | Package Dimension (WxHxD) | inch | 32 11/16 x 20 7/8 x 13 3/8 | 32 11/16 x 20 7/8 x 13 3/8 |
| | Net Weight | lb | 52.12 | 59.52 |
| | Gross Weight | lb | 59.52 | 66.14 |
| | Refrigerant | - | R410A | R410A |
| PIPE CONNECTION | Connection Pipe Length | ft | 15 | 15 |
| | Outer Diameter Liquid Pipe | inch | 1/4 | 1/4 |
| | Outer Diameter Gas Pipe | inch | 3/8 | 3/8 |



Warranty registration is required.

SKY_{pro}



Up to 23 SEER • From 9K to 36K BTU



Heat & Cool

Enjoy year round comfort with the ability to heat or cool your room or space. Can continue to heat in low ambient temperatures as low as -4 degrees Fahrenheit.

Inverter

Inverter
Technology

Units that use Inverter technology are more energy efficient than traditional ACs. This energy efficiency translates to extended unit life, quiet operation, and lower electricity bills.



Warranty

Each unit has 5 years for parts and 7 years for the compressor. Warranty registration is required.



Sky Pro Series



Specs

| Model | Unit | ASLEK4H4S09 ASLEC4H4S09 ASLCI4H4S09 | ASLEK4H4S12 ASLEC4H4S12 ASLCI4H4S12 | ASLEK4H4S18 ASLEC4H4S18 ASLCI4H4S18 | ASLEK4H4S24 ASLEC4H4S24 ASLCI4H4S24 | ASLEK4H4S36 ASLEC4H4S36 ASLCI4H4S36 |
|---------------------------------------|-----------|---|---|---|---|---|
| Power Supply | V/Ph/Hz | 208-230/1/60 | | | | |
| Cooling Capacity | Btu/h | 9,000 (4,850-11,600) | 12,000 (5,800-13,100) | 18,000 (4,200-21,000) | 24,000 (8,600-25,200) | 36000 (12,600-36,800) |
| Cooling Power Input | W | 700 | 960 | 1420 | 1920 | 3380 |
| Cooling Current Input | A | 3.6 | 4.3 | 6.5 | 8.6 | 14.6 |
| Heating Capacity (Min-Max) | Btu/h | 10,000 (4,340-12,280) | 12,000 (4,400-14,400) | 19,000 (5,600-24,000) | 24,000 (7,600-28,400) | 36,000 (15,000-42,600) |
| Heating Power Input (Min-Max) | W | 709 | 926 | 1,425 | 1,950 | 3,190 |
| Heating Current Input | A | 3.5 | 4.1 | 6.3 | 8.7 | 14 |
| Air Flow Volume (H/M/L) | CFM | 309/274/232 | 324/294/235 | 588/500/394 | 647/530/400 | 941/794/676 |
| EER | (Btu/h)/W | 12.86 | 12.5 | 12.68 | 12.5 | 10.65 |
| SEER | - | 22 | 23 | 22 | 19 | 19.5 |
| CASSETTE UNIT | | | | | | |
| Sound Pressure Level (H/M/L) | dB(A) | 38/34/31 | 42/37/33 | 38/36/34 | 44/40/38 | 49/43/39 |
| Dimension (WxDxH) | inch | 22 1/2 x 22 1/2 x 8 1/2 | 22 1/2 x 22 1/2 x 8 1/2 | 33 1/8 x 33 1/8 x 9 3/4 | 33 1/8 x 9 3/4 x 33 1/8 | 33 1/8 x 33 1/8 x 11 3/4 |
| Package Dimension (WxDxH) | inch | 28-3/4 x 26-1/4 x 11-1/2 | 28-3/4 x 26-1/4 x 11-1/2 | 39-1/4 x 37-5/8 x 14-5/8 | 39-1/4 x 37-5/8 x 14-5/8 | 39-1/4 x 37-5/8 x 16-1/2 |
| Net Weight | lb | 32 | 34 | 56 | 59.5 | 70.5 |
| Gross Weight | lb | 38.5 | 40.5 | 76 | 79.5 | 90.5 |
| DUCTED UNIT | | | | | | |
| Sound Pressure Level (H/M/L) | dB(A) | 35/33/32 | 36/34/33 | 38/37/36 | 42/38/36 | 43/40/38 |
| Dimension (WxHxD) | inch | 35 7/8 x 7 1/2 x 17 5/8 | 35 7/8 x 7 1/2 x 17 5/8 | 46 1/2 x 7 1/2 x 17 5/8 | 35 3/8 x 10 5/8 x 28 3/8 | 51 1/8 x 13 3/8 x 31 1/2 |
| Package Dimension (WxHxD) | inch | 42 1/2 x 11 1/4 x 22 1/4 | 43 1/2 x 11 1/4 x 22 1/4 | 53 1/8 x 11 1/4 x 22-1/4 | 46 x 13-3/8 x 34 1/4 | 61 x 16 1/8 x 37 |
| Net Weight | lb | 39.7 | 39.7 | 49.6 | 66.1 | 112.4 |
| Gross Weight | lb | 46.3 | 46.3 | 57.3 | 77.2 | 132.3 |
| OUTDOOR UNIT | | | | | | |
| Sound Pressure Level | dB(A) | 52 | 52 | 55 | 55 | 61 |
| Dimension (WxHxD) | inch | 31 7/8 x 22 7/8 x 11 | 31 7/8 x 22 7/8 x 11 | 33 7/8 x 26 3/8 x 12 1/4 | 37 3/8 x 33 1/8 x 13 3/8 | 37 3/8 x 41 3/8 x 13 3/8 |
| Package Dimension (WxHxD) | inch | 37 x 25 1/4 x 16 1/2 | 37 x 25 1/4 x 16 1/2 | 39 3/16 x 28 3/4 x 17 3/4 | 43 3/4 x 36 1/4 x 18 1/8 | 43 3/4 x 47 1/4 x 18 1/8 |
| Net Weight | lb | 75 | 79.4 | 105.8 | 155.1 | 192 |
| Gross Weight | lb | 83.8 | 88.2 | 114.6 | 166.4 | 214.5 |
| Refrigerant | - | R410A | R410A | R410A | R410A | R410A |
| PIPE CONNECTION | | | | | | |
| Refrigerant Charge | oz | 33.5 | 45.9 | 56.44 | 91.7 | 111.2 |
| Connection Pipe Length | ft | 25 | 25 | 25 | 25 | 25 |
| Connection Pipe Gas Additional Charge | oz/ft | 0.161 | 0.161 | 0.161 | 0.376 | 0.376 |
| Outer Diameter Liquid Pipe | inch | 1/4 | 1/4 | 1/4 | 3/8 | 3/8 |
| Outer Diameter Gas Pipe | inch | 3/8 | 3/8 | 1/2 | 5/8 | 3/4 |
| Max Distance Height | ft | 33 | 33 | 49 | 98 | 98 |
| Max Distance Length | ft | 82 | 82 | 98 | 164 | 164 |



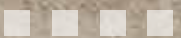
Energy Star Qualified for
Cassette Type Only

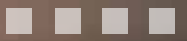


Warranty registration
is required.



www.airconint.com





Multi Zone Ductless



MULTISPLIT Series



Up to 22 SEER • From 18K to 42K BTU



Heat & Cool

Enjoy year round comfort with the ability to heat or cool your room or space. Build your multi-zone unit with compatible outdoor and indoor units.



Mix & Match

Mix & match compatible indoor units to complete your multi zone A/C system.



Warranty

Each unit has 5 years for parts and 7 years for the compressor. Warranty registration is required.



Outdoor Unit Specs



| Model | | Unit | AMSCI4H4S18 | AMSCI4H4S24 | AMSCI4H4S36 | AMSCI4H4S42 |
|----------------------------|----------------------------|-----------|--------------------------|--------------------------|--------------------------|--------------------------|
| Power Supply | | V/Ph/Hz | 208-230/1/60 | 208-230/1/60 | 208-230/1/60 | 208-230/1/60 |
| Cooling Capacity (Min-Max) | | Btu/h | 18,000 (7,500-24,000) | 24,000 (8,000-30,200) | 32,000 (12,000-42,000) | 42,000 (9,000-50,000) |
| Cooling Current Input | | A | 6.5 | 8.7 | 11 | 17.5 |
| Heating Capacity (Min-Max) | | Btu/h | 18,000 (5,800-28,700) | 24,000 (5,200-37,000) | 36,000 (8,000-52,000) | 42,000 (9,000-52,000) |
| Heating Current Input | | A | 6.9 | 8.7 | 13 | 17 |
| Air Flow Volume | | CFM | 1,850 | 2,350 | 3,411 | 3,411 |
| EER | | (Btu/h)/W | 12.5 | 12.5 | 12.5 | 10.5 |
| SEER | | - | 22 | 22 | 21 | 20 |
| OUTDOOR UNIT | Sound Pressure Level | dB(A) | 55 | 59 | 59 | 63 |
| | Dimension (WxHxD) | inch | 33-7/8 x 26-3/8 x 12-1/4 | 37-3/8 x 33 x 13-3/8 | 37-3/8 x 41-3/8 x 13-3/8 | 37-3/8 x 41-3/8 x 13-3/8 |
| | Package Dimension (WxHxD) | inch | 39 x 17-3/4 x 28-3/4 | 43-3/4 x 18-1/8 x 36-1/4 | 43-3/4 x 18-1/8 x 47-1/4 | 43-3/4 x 18-1/8 x 47-1/4 |
| | Net Weight | lb | 116.8 | 158.7 | 188.5 | 198.4 |
| | Gross Weight | lb | 125.6 | 169.5 | 220.5 | 224.5 |
| PIPE CONNECTION | Refrigerant Charge | oz | 63.49 | 81.13 | 105.82 | 120 |
| | Outer Diameter Liquid Pipe | inch | 1/4 | 1/4 | 1/4 | 1/4 |
| | Outer Diameter Gas Pipe | inch | 3/8 | 3/8 | 3/8 | 3/8 |

Wall Mounted Unit Specs



| Model | | Unit | ABXEM4H4S09 | ABXEM4H4S12 | ABXEM4H4S18 | ABXEM4H4S24 |
|-----------------------|------------------------------|---------|--------------------------|--------------------------|---------------------------|---------------------------|
| Power Supply | | V/Ph/Hz | 208-230/1/60 | 208-230/1/60 | 208-230/1/60 | 208-230/1/60 |
| Cooling Capacity | | Btu/h | 9,000 | 12,000 | 18,000 | 23,400 |
| Cooling Current Input | | A | 0.11 | 0.11 | 0.17 | 0.17 |
| Heating Capacity | | Btu/h | 9,500 | 13,000 | 19,000 | 26,000 |
| Air Flow Volume | | CFM | 341 | 365 | 647 | 706 |
| INDOOR UNIT | Sound Pressure Level (H/M/L) | dB(A) | 39/35/30 | 39/35/30 | 38/37/36 | 42/38/36 |
| | Dimension (WxHxD) | inch | 37-3/8x10-3/4 x 8-1/8 | 37-3/8 x 10-3/4 x 8-1/8 | 48 x 12-5/8 x 9-1/4 | 48 x 12-5/8 x 9-1/4 |
| | Package Dimension (WxHxD) | inch | 39-3/8 x 13-3/16 x 6-3/8 | 39-3/8 x 13-3/16 x 6-3/8 | 51-3/4 x 15-7/16 x 12-1/2 | 51-3/4 x 15-7/16 x 12-1/2 |
| | Net Weight | lb | 19.84 | 19.84 | 31.97 | 31.97 |
| | Gross Weight | lb | 24.25 | 24.25 | 37.48 | 37.48 |
| PIPE CONNECTION | Outer Diameter Liquid Pipe | inch | 1/4 | 1/4 | 1/4 | 3/8 |
| | Outer Diameter Gas Pipe | inch | 3/8 | 3/8 | 1/2 | 5/8 |



Warranty registration is required.

Ducted Unit Specs



| Model | | Unit | ASLEK4H4S09 | ASLEK4H4S12 | ASLEK4H4S18 | ASLEK4H4S24 |
|-----------------------|------------------------------|---------|--------------------------|--------------------------|--------------------------|--------------------------|
| Power Supply | | V/Ph/Hz | 208-230/1/60 | 208-230/1/60 | 208-230/1/60 | 208-230/1/60 |
| Cooling Capacity | | Btu/h | 9,000 | 12,000 | 18,000 | 24,000 |
| Cooling Current Input | | A | 0.25 | 0.25 | 0.33 | 0.5 |
| Heating Capacity | | Btu/h | 10,000 | 12,500 | 19,000 | 24,000 |
| Air Flow Volume | | CFM | 306 | 353 | 529 | 706 |
| INDOOR UNIT | Sound Pressure Level (H/M/L) | dB(A) | 35/33/32 | 36/34/33 | 38/37/36 | 42/38/36 |
| | Dimension (WxHxD) | inch | 35-7/8 x 7-7/16 x 17-1/2 | 35-7/8 x 7-7/16 x 17-1/2 | 35-3/8 x 10-5/8 x 28-3/8 | 46-7/16 x 7-1/2 x 17-1/2 |
| | Package Dimension (WxHxD) | inch | 42-1/2 x 11-1/4 x 22-1/4 | 42-1/2 x 11-1/4 x 22-1/4 | 46 x 13-3/8 x 34-1/4 | 53-1/8 x 11-1/4 x 22-1/4 |
| | Net Weight | lb | 18 | 18 | 22.5 | 30 |
| | Gross Weight | lb | 21 | 21 | 25.5 | 35 |
| PIPE CONNECTION | Outer Diameter Liquid Pipe | inch | 1/4 | 1/4 | 1/4 | 3/8 |
| | Outer Diameter Gas Pipe | inch | 3/8 | 3/8 | 1/2 | 5/8 |

Cassette Unit Specs



| Model | | Unit | ASLEC4H4S09 | ASLEC4H4S12 | ASLEC4H4S18 | ASLEC4H4S24 |
|-----------------------|------------------------------|---------|----------------------------|----------------------------|----------------------------|----------------------------|
| Power Supply | | V/Ph/Hz | 208-230/1/60 | 208-230/1/60 | 208-230/1/60 | 208-230/1/60 |
| Cooling Capacity | | Btu/h | 9,000 | 12,000 | 18,000 | 23,400 |
| Cooling Current Input | | A | 0.25 | 0.25 | 0.4 | 0.4 |
| Heating Capacity | | Btu/h | 10,200 | 13,500 | 19,000 | 27,000 |
| Air Flow Volume | | CFM | 306 | 353 | 559 | 647 |
| INDOOR UNIT | Sound Pressure Level (H/M/L) | dB(A) | 38/34/31 | 42/37/33 | 38/36/34 | 44/40/38 |
| | Dimension (WxHxD) | inch | 22-7/16 x 8-7/16 x 22-7/16 | 22-7/16 x 8-7/16 x 22-7/16 | 33 x 9-3/4 x 33 | 33 x 9-3/4 x 33 |
| | Package Dimension (WxHxD) | inch | 28-3/4 x 11-1/2 x 26-5/16 | 28-3/4 x 11-1/2 x 26-5/16 | 39-1/4 x 37-1/16 x 14-9/16 | 39-1/4 x 37-1/16 x 14-9/16 |
| | Net Weight | lb | 14.5 | 15.5 | 22.5 | 27 |
| | Gross Weight | lb | 38.5 | 40.5 | 73.8 | 79.5 |
| PIPE CONNECTION | Outer Diameter Liquid Pipe | inch | 1/4 | 1/4 | 1/4 | 3/8 |
| | Outer Diameter Gas Pipe | inch | 3/8 | 3/8 | 1/2 | 5/8 |

www.airconint.com



Warranty registration is required.





MULTISPLIT Series

5 can connect up to **UNITS**



Inverter



AHRI
AIR-CONDITIONING, HEATING,
& REFRIGERATION INSTITUTE

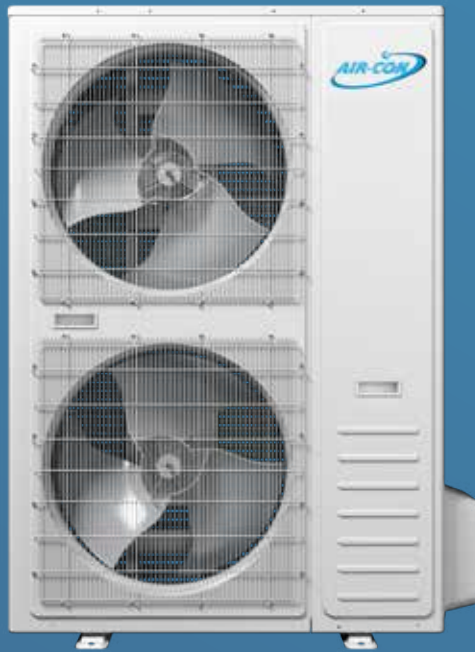


Warranty registration is required.



Ducted Units





SD-Premium



18 SEER • From 24K to 60K BTU



Heat & Cool

Heat pump air conditioners can both heat and cool. The SD Premium Series can work in low ambient temperatures as well (5° F for cooling and -13° F for heating).



Inverter
Technology

Units that use Inverter technology are more energy efficient than traditional ACs. This energy efficiency translates to extended unit life, quiet operation, and lower electricity bills.



Warranty

Each unit has 10 years for parts and 10 years for the compressor. Warranty registration is required.



SD Premium



Specs

| Model | | Unit | ASDDI4H4S24 / ASDVI4H4S24 | ASDDI4H4S36 / ASDVI4H4S36 | ASDDI4H4S48 / ASDVI4H4S48 | ASDDI4H4S60 / ASDVI4H4S60 |
|----------------------------|---------------------------------------|-----------|---------------------------|---------------------------|---------------------------|---------------------------|
| Power Supply | | V/Ph/Hz | 208-230 / 1 / 60 | | | |
| Cooling Capacity (Min-Max) | | Btu/h | 24000 (6,700-26,000) | 36000 (11,800-36,800) | 48000 (18,300-52,000) | 56000 (18,300-59,400) |
| Cooling Power Input | | W | 2200 | 3730 | 4690 | 6560 |
| Cooling Current Input | | A | 9.6 | 16.5 | 21 | 26.8 |
| Heating Capacity (Min-Max) | | Btu/h | 24,000 (6,700-26,000) | 36,000 (8,900-38,200) | 48,000 (17,600-52,000) | 56,000 (17,600-57,000) |
| Heating Power Input | | W | 2000 | 3200 | 4260 | 5290 |
| Heating Current Input | | A | 8.7 | 14.1 | 19 | 21 |
| Air Flow Volume | | CFM | 800 | 1120 | 1588 | 1706 |
| Dehumidification Volume | | Pint/h | 4.64 | 9.51 | 11.6 | 15.8 |
| EER | | (Btu/h)/W | 10.9 | 9.55 | 10.24 | 8.55 |
| SEER | | - | 18 | 18 | 18 | 17.5 |
| INDOOR UNIT | Sound Pressure Level | dB(A) | 55 | 57 | 64 | 65 |
| | Dimension (WxHxD) | inch | 19 5/8 × 46 1/8 × 21 5/8 | 19 5/8 × 46 1/8 × 21 5/8 | 22 × 53-7/8 × 24 | 22 × 53 7/8 × 24 |
| | Package Dimension (WxHxD) | inch | 22 1/2 × 49 5/8 × 25 3/8 | 22 1/2 × 49 5/8 × 25 3/8 | 25-1/4 × 55-1/2 × 28 | 25 7/4 × 55 1/2 × 28 |
| | Net Weight | lb | 135.5 | 140 | 187.2 | 187.2 |
| | Gross Weight | lb | 158.6 | 163.1 | 214 | 214 |
| OUTDOOR UNIT | Sound Pressure Level | dB(A) | 54 | 56 | 59 | 60 |
| | Dimension (WxHxD) | inch | 33 7/8 × 26 3/8 × 12 1/4 | 37 3/8 × 33 × 13 3/8 | 37-3/8 × 54-5/8 × 13-3/8 | 37 3/8 × 54 5/8 × 13-3/8 |
| | Package Dimension (WxHxD) | inch | 39 × 28 3/4 × 17 3/4 | 43 3/4 × 36 1/4 × 18 1/8 | 43-3/4 × 60-1/4 × 18-1/8 | 43 3/4 × 60 1/4 × 18 1/8 |
| | Net Weight | lb | 112 | 148 | 227.1 | 251 |
| | Gross Weight | lb | 121 | 159 | 253.5 | 278 |
| Refrigerant | | - | R-410A | R-410A | R-410A | R-410A |
| PIPE CONNECTION | Refrigerant Charge | oz | 70.5 | 98.7 | 142.9 | 143 |
| | Connection Pipe Length | ft | 25 | 25 | 25 | 25 |
| | Connection Pipe Gas Additional Charge | oz/ft | 0.38 | 0.38 | 0.6 | 0.6 |
| | Outer Diameter Liquid Pipe | inch | 3/8 | 3/8 | 3/8 | 3/8 |
| | Outer Diameter Gas Pipe | inch | 5/8 | 3/4 | 7/8 | 7/8 |
| | Max Distance Height | ft | 98 | 98 | 98 | 98 |
| | Max Distance Length | ft | 164 | 246 | 246 | 246 |



Inverter



AHRI
AIR-CONDITIONING, HEATING,
& REFRIGERATION INSTITUTE



Warranty registration
is required.



SaturnTD Inverter



Up To 19 SEER • From 24K to 60K BTU



Cooling Only

The Saturn Inverter series offers cooling capabilities with optional heat element. All models are SEER2 compliant.



Inverter
Technology

Units that use Inverter technology are more energy efficient than traditional ACs. This translates to extended unit life, quiet operation, and lower electricity bills.



Warranty

Each unit has 10 years for parts and 10 years for the compressor. Warranty registration is required.



Saturn Top Discharge Inverter



Condenser (ODU Specs)

| Model | | Unit | AVDIC4C4T24 | AVDIC4C4T36 | AVDIC4C4T48 | AVDIC4C4T60 |
|---|--------------------|---------|----------------------|-------------|-----------------------|-------------|
| Voltage-Phase-Hz | | V-Ph-Hz | 208/230V-1Ph-60Hz | | | |
| Cooling | Capacity | Btu/h | 22000 | 23600 | 47000 | 54500 |
| | EER2 | Btu/h.W | 13.0 | 12.0 | 11.7 | 11.2 |
| | SEER2 | Btu/h.W | 19 | 18.5 | 18 | 17.5 |
| Airflow | | CFM | 2800 | 2800 | 3800 | 3800 |
| Outdoor noise level | | dB(A) | 41-62 | | 41-63 | |
| Outdoor unit | Dimension (W×H×D) | mm | 740×633×740 | | 740×835×740 | |
| | | inch | 29-1/7×25×29-1/7 | | 29-1/7×32-7/8×29-1/7 | |
| | Packing (W×H×D) | mm | 775×665×775 | | 775×865×775 | |
| | | in. | 30-1/2×26-1/5×30-1/2 | | 30-1/2×34-1/10×30-1/2 | |
| | Net / Gross weight | kg | 72.5/75.5 | 72.5/75.5 | 92/97 | 92/97 |
| | | lbs | 160/166 | 160/166 | 203/214 | 203/214 |
| Refrigerant System (Liquid side/Gas Side) | | in. | 3/8 / 3/4 | 3/8 / 3/4 | 3/8 / 7/8 | 3/8 / 7/8 |
| Refrigerant Charge | | oz | 116.4 | 116.4 | 162.3 | 162.3 |

Inverter Split Air Handler (IDU Specs)

| Model | | | AVDEM4H4T24 | AVDEM4H4T36 | AVDEM4H4T48 | AVDEM4H4T60 |
|---|--------------------|---------|----------------------|-------------|------------------|-------------|
| Power supply | | V/Ph/Hz | 208/230V-1Ph-60Hz | | | |
| Cooling | Capacity | Btu/h | 22000 | 33600 | 47000 | 54500 |
| | SEER2 | Btu/h.W | 19.0 | 18.5 | 18.0 | 17.5 |
| Indoor air flow | | CFM | 860 | 1120 | 1570 | 1570 |
| Indoor noise level | | dB(A) | 44-55 | 46-57 | 47-58 | 47-58 |
| Indoor Unit | Dimension (W×H×D) | mm | 500×1162×560 | | 560×1350×620 | |
| | | in. | 19-2/3×45-3/4×22 | | 22×53-1/8×24-1/2 | |
| | Packing (W×H×D) | mm | 580×1210×650 | | 640×1390×710 | |
| | | in. | 22-5/6×47-5/8×25-3/5 | | 25-1/5×54-3/4×28 | |
| | Net / Gross weight | kg | 59/64 | 59/64 | 78 / 84 | 80 / 86 |
| | | lbs | 130/141 | 130/141 | 172 / 185 | 176 / 189 |
| Refrigerant piping Liquid side / Gas side | | in. | 3/8 / 3/4 | 3/8 / 3/4 | 3/8 / 7/8 | 3/8 / 7/8 |



Warranty registration is required.



15 SEER • From 18K to 36K BTU



Heat & Cool

Heat Pump air conditioners can both heat and cool. All models are SEER2 compliant.



Accepts Any Standard Thermostat

The Saturn Series units are equipped to connect easily to standard home thermostats.



Warranty

Each unit has 10 years for parts and 10 years for the compressor. Warranty registration is required.



Saturn Series Front Return



Condenser (ODU Specs)

| Model | | | ATSCV4H4T18 | ATSCV4H4T24 | ATSCV4H4T30 | ATSCV4H4T36 |
|------------------------------|------------------------------|---------|----------------------|----------------------|----------------------|------------------------|
| Outdoor power supply | | V/Ph/Hz | 230V/1N/60HZ | 230V/1N/60HZ | 230V/1N/60HZ | 230V/1N/60HZ |
| Cooling | Capacity | Btu/h | 17500 | 22000 | 28000 | 33000 |
| | Input | W | 1550 | 2000 | 2370 | 2780 |
| | EER2 | Btu/h.W | 11.50 | 11.20 | 11.50 | 11.50 |
| | SEER2 (AHRI Certified) | Btu/h.W | 14.3 | 14.3 | 14.3 | 14.3 |
| Heating | Capacity | Btu/h | 17500 | 22000 | 26000 | 33000 |
| | HSPF2(AHRI Certified) | Btu/h.W | 7.50 | 7.50 | 7.50 | 7.50 |
| Max. input consumption | | W | 2250.00 | 3050.00 | 3300.00 | 4455.00 |
| Max. current | | A | 11.50 | 15.00 | 17.00 | 23.00 |
| Outdoor air flow | | CFM | 2000 | 2000 | 2250 | 2750 |
| Outdoor sound pressure level | | dB(A) | 60 | 60 | 63 | 63 |
| Outdoor dimension | Unit (W*H*D) | in | 23-3/5×25×23-3/5 | 23-3/5×25×23-3/5 | 23-3/5×25×23-3/5 | 29-1/7×25×29-1/7 |
| | | mm | 600×633×600 | 600×633×600 | 600×633×600 | 740×633×740 |
| | Packing (W*H*D) | in | 24-4/5×26-1/5×24-4/5 | 24-4/5×26-1/5×24-4/5 | 24-4/5×26-1/5×24-4/5 | 30-3/10×26-1/5×30-3/10 |
| | | mm | 630×665×630 | 630×665×630 | 630×665×630 | 770×665×770 |
| | Net / Gross weight | kg | 57.5/60 | 58.5/61 | 66/68.5 | 75.5/78.5 |
| | | lbs | 127/132 | 129/134 | 146/151 | 166/173 |
| Refrigerant | Type | | R410A | R410A | R410A | R410A |
| | Charging volume | oz | 93.50 | 98.80 | 105.80 | 123.50 |
| | Liquid side | in | φ3/8 | φ3/8 | φ3/8 | φ3/8 |
| Refrigerant pipe | Gas side | in | φ3/4 | φ3/4 | φ3/4 | φ3/4 |
| | Max. refrigerant pipe length | ft | 148 | 148 | 148 | 148 |
| | Max. difference in level | ft | 66 | 66 | 66 | 66 |

Front Return Air Handler (IDU Specs)

| Model | | | ATSFR4H4T18 | ATSFR4H4T24 | ATSFR4H4T30 | ATSFR4H4T36 |
|-----------------------------|--------------------|---------|-----------------------|-----------------------|-----------------------|-----------------------|
| Power supply | | V/Ph/Hz | 208~230V/1N/60Hz | 208~230V/1N/60Hz | 208~230V/1N/60Hz | 208~230V/1N/60Hz |
| Cooling | Capacity | Btu/h | 17500 | 22000 | 28000 | 33000 |
| | SEER2 | Btu/h.W | 14.30 | 14.30 | 14.30 | 14.30 |
| Indoor air flow | | CFM | 715 | 805 | 1020 | 1145 |
| Indoor sound pressure level | | dB(A) | / | / | / | / |
| Indoor dimension | Unit (W*H*D) | in | 20-3/5×36×15 | 20-3/5×36×15 | 22-1/10×39-3/5×19 | 22-1/10×39-3/5×19 |
| | | mm | 524×915×381 | 524×915×381 | 562×1006×485 | 562×1006×485 |
| | Packing (W*H*D) | in | 23-1/5×39-2/5×17-7/10 | 23-1/5×39-2/5×17-7/10 | 24-3/5×42-9/10×21-3/5 | 24-3/5×42-9/10×21-3/5 |
| | | mm | 590×1000×450 | 590×1000×450 | 625×1090×550 | 625×1090×550 |
| | Net / Gross weight | kg | 40/44 | 40/44 | 51/56 | 51/56 |
| | | lbs | 88/97 | 88/97 | 112/123 | 112/123 |
| Refrigerant pipe | Liquid side | in | 3/8 | 3/8 | 3/8 | 3/8 |
| | Gas side | in | 3/4 | 3/4 | 3/4 | 3/4 |



Warranty registration is required.



Up To 15 SEER • From 18K to 60K BTU



Heat & Cool

Heat Pump air conditioners can both heat and cool. All models are SEER2 compliant.



Accepts Any Standard Thermostat

The Saturn Series units are equipped to connect easily to standard home thermostats.



Industry Leading Warranty

Each unit has 10 years for parts and 10 years for the compressor. Warranty registration is required.

www.airconint.com

31

Warranty

Saturn Series Top Discharge



Condenser (ODU Specs)

| Model | | | ATSCV4H4T18 | ATSCV4H4T24 | ATSCV4H4T30 | ATSCV4H4T36 | ATSCV4H4T42 | ATSCV4H4T48 | ATSCV4H4T60 |
|------------------------------|------------------------------|---------|----------------------|----------------------|----------------------|------------------------|------------------------|------------------------|------------------------|
| Outdoor power supply | | V/Ph/Hz | 230V/1N/60HZ | 230V/1N/60HZ | 230V/1N/60HZ | 230V/1N/60HZ | 230V/1N/60HZ | 230V/1N/60HZ | 230V/1N/60HZ |
| Cooling | Capacity | Btu/h | 17500 | 22000 | 28000 | 33000 | 40000 | 45000 | 56000 |
| | Input | W | 1550 | 2000 | 2370 | 2780 | 3400 | 3770 | 4870 |
| | EER2 | Btu/h.W | 11.50 | 11.20 | 11.50 | 11.50 | 11.50 | 11.50 | 11.50 |
| | SEER2 (AHRI Certified) | Btu/h.W | 14.3 | 14.3 | 14.3 | 14.3 | 14.3 | 14.3 | 14.3 |
| Heating | Capacity | Btu/h | 17500 | 22000 | 26000 | 33000 | 40000 | 44000 | 53000 |
| | HSPF2(AHRI Certified) | Btu/h.W | 7.50 | 7.50 | 7.50 | 7.50 | 7.50 | 7.50 | 7.50 |
| Max. input consumption | | W | 2250.00 | 3050.00 | 3300.00 | 4455.00 | 5430.00 | 6000.00 | 7300.00 |
| Max. current | | A | 11.50 | 15.00 | 17.00 | 23.00 | 28.00 | 29.50 | 37.00 |
| Outdoor air flow | | CFM | 2000 | 2000 | 2250 | 2750 | 3300 | 4000 | 4000 |
| Outdoor sound pressure level | | dB(A) | 60 | 60 | 63 | 63 | 65 | 65 | 63 |
| Outdoor dimension | Unit (W*H*D) | in | 23-3/5*25*23-3/5 | 23-3/5*25*23-3/5 | 23-3/5*25*23-3/5 | 29-17*25*29-17 | 29-17*32-7/8*29-17 | 29-17*32-7/8*29-17 | 29-17*32-7/8*29-17 |
| | | mm | 600*633*600 | 600*633*600 | 600*633*600 | 740*633*740 | 740*835*740 | 740*835*740 | 740*835*740 |
| | Packing (W*H*D) | in | 24-4/5*26-1/5*24-4/5 | 24-4/5*26-1/5*24-4/5 | 24-4/5*26-1/5*24-4/5 | 30-3/10*26-1/5*30-3/10 | 30-3/10*34-4/5*30-3/10 | 30-3/10*34-4/5*30-3/10 | 30-3/10*34-4/5*30-3/10 |
| | | mm | 630*665*630 | 630*665*630 | 630*665*630 | 770*665*770 | 770*885*770 | 770*885*770 | 770*885*770 |
| | Net / Gross weight | kg | 57.5/60 | 58.5/61 | 66/68.5 | 75.5/78.5 | 94/99 | 97/102 | 104/109 |
| | | lbs | 127/132 | 129/134 | 146/151 | 166/173 | 207/218 | 214/225 | 229/240 |
| Refrigerant | Type | | R410A | R410A | R410A | R410A | R410A | R410A | R410A |
| | Charging volume | oz | 93.50 | 98.80 | 105.80 | 123.50 | 151.70 | 162.30 | 197.50 |
| Refrigerant pipe | Liquid side | in | Φ3/8 | Φ3/8 | Φ3/8 | Φ3/8 | Φ3/8 | Φ3/8 | Φ3/8 |
| | | in | Φ3/4 | Φ3/4 | Φ3/4 | Φ3/4 | Φ3/4 | Φ7/8 | Φ7/8 |
| | Max. refrigerant pipe length | ft | 148 | 148 | 148 | 148 | 148 | 148 | 148 |
| | | ft | 66 | 66 | 66 | 66 | 66 | 66 | 66 |

Standard Split Air Handler (IDU Specs)

| Model | | | ATSEM4H4T18 | ATSEM4H4T24 | ATSEM4H4T30 | ATSEM4H4T36 | ATSEM4H4T42 | ATSEM4H4T48 | ATSEM4H4T60 |
|-----------------------------|--------------------|---------|----------------------|----------------------|----------------------|----------------------|----------------------|-----------------------|-----------------------|
| Power supply | | V/Ph/Hz | 208-230V/1N/60Hz | 208-230V/1N/60Hz | 208-230V/1N/60Hz | 208-230V/1N/60Hz | 208-230V/1N/60Hz | 208-230V/1N/60Hz | 208-230V/1N/60Hz |
| Cooling | Capacity | Btu/h | 17500 | 22000 | 28000 | 33000 | 40000 | 45000 | 55500 |
| | SEER2 | Btu/h.W | 14.30 | 14.30 | 14.30 | 14.30 | 14.30 | 13.80/14.30 | 13.80/14.30 |
| Indoor air flow | | CFM | 580 | 800 | 980 | 1150 | 1280 | 1580 | 1570 |
| Indoor sound pressure level | | dB(A) | / | / | / | / | / | / | / |
| Indoor dimension | Unit (W*H*D) | in | 19-2/3*45-3/4*22 | 19-2/3*45-3/4*22 | 19-2/3*45-3/4*22 | 19-2/3*45-3/4*22 | 19-2/3*45-3/4*22 | 22*53-1/8*24 | 22*53-1/8*24 |
| | | mm | 500*1162*560 | 500*1162*560 | 500*1162*560 | 500*1162*560 | 500*1162*560 | 560*1350*623 | 560*1350*623 |
| | Packing (W*H*D) | in | 22-5/6*47-5/8*25-3/5 | 22-5/6*47-5/8*25-3/5 | 22-5/6*47-5/8*25-3/5 | 22-5/6*47-5/8*25-3/5 | 22-5/6*47-5/8*25-3/5 | 27-3/4*54-9/10*25-1/5 | 27-3/4*54-9/10*25-1/5 |
| | | mm | 580*1210*650 | 580*1210*650 | 580*1210*650 | 580*1210*650 | 580*1210*650 | 705*1395*640 | 705*1395*640 |
| | Net / Gross weight | kg | 57/62 | 60/65 | 59/64 | 59/64 | 61/66 | 78/84 | 78/84 |
| | | lbs | 126/137 | 132/143 | 130/141 | 130/141 | 134/146 | 172/185 | 172/185 |
| Refrigerant pipe | Liquid side | in | 3/8 | 3/8 | 3/8 | 3/8 | 3/8 | 3/8 | 3/8 |
| | Gas side | in | 3/4 | 3/4 | 3/4 | 3/4 | 3/4 | 7/8 | 7/8 |



Warranty registration is required.

Package Units





PTAC

Package Terminal A/C



9K • 12K • 15K BTU



Electric Heat & Wired
Remote Ready

The Air-Con PTAC unit comes equipped with electric heat and easy connection for wired remotes. This unit can connect to standard thermostats.



Each unit has 2 years for parts and 5 years for the compressor. Warranty registration is required.



PTAC



- Includes Wall Sleeve & Back Grille

Specs

HEAT PUMP with HEATER

| Model | Unit | ATT7H4R09 | ATT7H4R12 | ATT7H4R15 |
|-------------------|---------|-----------------------|---------------|---------------|
| Power Supply | V/Ph/Hz | 208-230/1/60 | | |
| Cooling Capacity | Btu/h | 9,000/8,800 | 12,000/11,800 | 14,200/14,500 |
| Heating Capacity | Btu/h | 8,100/7,900 | 10,700/10,500 | 13,000/12,800 |
| EER/C.O.P | - | 11.3/11.4 | 10.7/10.5 | 9.8/9.7 |
| Dimension (WxHxD) | inch | 42 1/16 x 16 x 21 1/2 | | |

COOLING ONLY with HEATER

| Model | Unit | ATT7C4R09 | ATT7C4R12 | ATT7C4R15 |
|-------------------|---------|-----------------------|---------------|---------------|
| Power Supply | V/Ph/Hz | 208-230/1/60 | | |
| Cooling Capacity | Btu/h | 9,000/8,800 | 12,000/11,800 | 14,500/14,200 |
| EER/C.O.P | - | 11.3/11.4 | 10.7/10.5 | 9.8 |
| Dimension (WxHxD) | inch | 42 1/16 x 16 x 21 1/2 | | |



Warranty registration is required.

APV ROOFTOP SERIES



Up To 18 SEER • From 36K to 60K BTU



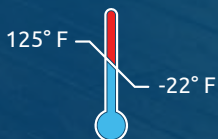
Flexible
Installation

Choose from various air flow configurations including side flow, bottom duct and ground installation.

Inverter

Inverter
Technology

This energy efficient unit adapts according to the load demand and provides the right comfort to the space.



High & Low
Operation Range

Meet the environmental demands with cooling capacity as high as 125° F and heating capacity as low as -22° F

APV Rooftop Series



Specs

| Model | Unit | APIV4H4R03 | APIV4H4R04 | APIV4H4R05 |
|---|-------------------|-------------------------|------------------|------------------|
| Cooling Capacity | kW | 10.05 | 13.77 | 16.7 |
| | Btu/h | 34,300 | 47,000 | 57,000 |
| | ton | 3 | 4 | 5 |
| Heating Capacity | kW | 10.55 | 13.77 | 16.7 |
| | Btu/h | 36000 | 47000 | 57000 |
| | ton | 3 | 4 | 5 |
| EER | W/W | 3.23 | 3.22 | 2.93 |
| | (Btu/h)/W | 11 | 11 | 10 |
| COP | W/W | 3.24 | 3.36 | 3.18 |
| | (Btu/h)/W | 11.6 | 11.5 | 10.9 |
| SEER | - | 18 | 18 | 17 |
| HSPF | - | 8.8 | 8.5 | 8.3 |
| Air Flow Volume(H,M,L) | CFM | 1120, 800, 700 | 1350, 900, 860 | 1600, 1200, 1100 |
| Air Flow Volume(H,M,L) | m ³ /h | 1900, 1360, 1190 | 2300, 1550, 1450 | 2700, 2000, 1850 |
| Power Supply | V/Hz/PH | 208V/230V-60Hz-1Ph | | |
| Max. Over Current Protection | A | 45 | 45 | 45 |
| Min. Current (MCA) | A | 39.1 | 39.1 | 39.1 |
| Drainage Connection Size (Outer Diameter×Wall Thickness) | mm | 19.05 | 19.05 | 19.05 |
| | inch | 3/4 | 3/4 | 3/4 |
| Cooling Operation Ambient | °C | -5~52 | -5~52 | -5~52 |
| Temperature Range | °F | 23~125 | 23~125 | 23~125 |
| Heating Operation Ambient | °C | -30~24 | -30~24 | -30~24 |
| Temperature Range | °F | -22~75.2 | -22~75.2 | -22~75.2 |
| Refrigerant | - | R410A | | |
| Refrigerant Charge | kg | 5 | 6.7 | 6.7 |
| | oz | 176.4 | 236.4 | 236.4 |
| Cooling Throttling Method | - | Electric Expanded Valve | | |
| Net Weight | kg | 244 | 285 | 285 |
| | lbs | 538 | 628 | 628 |
| Gross Weight | kg | 254 | 295 | 295 |
| | lbs | 560 | 650 | 650 |
| Dimensions (WxDxH) | inch | 44 x 35.43 x 49 1/4 | 44 x 44 x 49 1/4 | 44 x 44 x 49 1/4 |



Warranty registration is required.

Accessories

Installation Kits

Installation kits come in two sizes:

- 15 feet
- 25 feet

Comes with insulated copper tubing and electrical wires.



Wall Brackets

Our wall brackets are a one-size-fits-most model. One bracket can adjust to accommodate 9,000-24,000 BTU models.



Universal Remote

QTH-4000 Universal remote works with 99% of existing mini split models. Use this to replace a broken or lost remote control.



410A Access Fitting

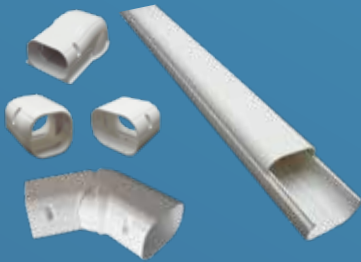
5/16" (1/2"-20) Female x 1/4" Male Adapter.





Vacuum Pump

- High performance vacuum pump
- Anti-oil-return
- Environment Friendly



Lineset Covers

Hide outdoor-facing tubing with covers for a more attractive outdoor space.



Two Way Manifold

Works with all refrigerants. Easy to read color scales.



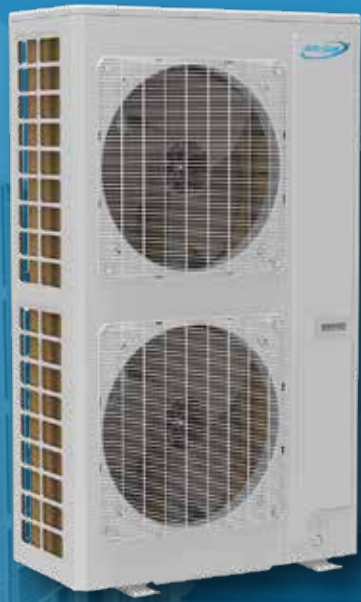
Concrete Slab

Place outdoor unit on top of even ground with a concrete slab.



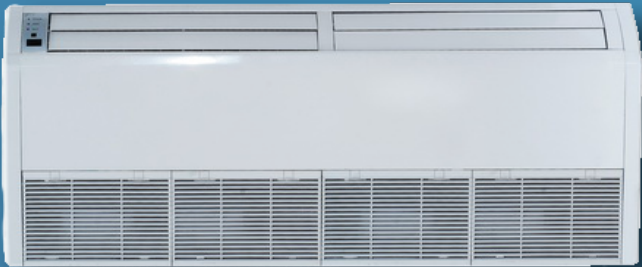
VRF System

Up To 77 Tons





Variety of Indoor Units for your VRF Systems

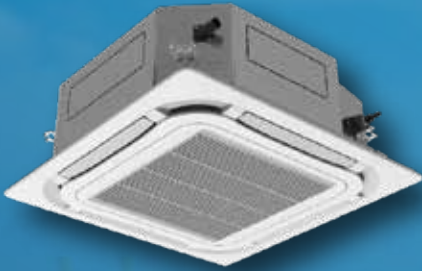


www.airconcommercial.com



Export Only Products

We offer Export Only products for the Caribbean & Latin America!



www.airconint.com



Contact us for more information and full product offerings

Email: customerservice@airconint.com

Phone: (954) 771-1415

43





Factory Warranty

| Unit | Parts Warranty | Compressor Warranty |
|--|----------------|---------------------|
| Mini Split Inverter (Blue Series 4 & Blue Hyper) | 5 | 7 |
| Mini Split Inverter (Titanium Series) | 5 | 7 |
| Mini Split Inverter (Eclipse Series) | 5 | 7 |
| Mini Split Inverter (Serene Series) | 5 | 7 |
| Sky Pro Series | 5 | 7 |
| Multi-Split Inverter | 5 | 7 |
| Ducted (SD Premium) | 10 | 10 |
| Ducted (Saturn Series) | 10 | 10 |
| All-In-One (PTAC) | 2 | 5 |
| APV Rooftop Series | 1 | 5 |

The factory warranty is valid from the date of the seller's invoice date. Registration is required. Limited warranty applies to unregistered units. Warranty is subject to change.

Need Guides, Manuals and other Air-Con info?

Please visit the Air-Con International Support Wiki for wiring guides, specs and more!



www.airconint.com/wiki



WARNINGS AND RECOMMENDATIONS:

Always use a licensed HVAC installer or contractor to install Air-Con products. Improper installation can lead to health hazards and property damage. Installation by an unlicensed HVAC installer will void any warranties attached to a product.

Please read the User's Manual before operation. The manual contains important information on usage and regular maintenance.

Any products featured in this catalog are subject to continuous changes. Air-Con reserves the right to modify the product design, specifications and information in this catalog without notice.



www.airconint.com

Air-Con International, Inc.
2031 SW 2nd St
Pompano Beach, FL 33069
Ph: 954-771-1415

Miami Store
7108 NW 50th St
Miami, FL 33166
Ph: 786-238-7234

Broward Store
2031 SW 2nd St
Pompano Beach FL 33069
Ph: 954-771-1415

Boynton Beach Store
3473 High Ridge Rd
Boynton Beach, FL 33426
Ph: 561-355-0380