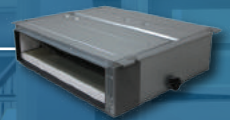




# 2023

## Residential & Commercial Catalog



[www.airconint.com](http://www.airconint.com)





# Index

About Us . . . . .	3
Single Zone Units . . . . .	4
Blue 3 Series . . . . .	5
Serene Series . . . . .	7
Eclipse Series . . . . .	9
Titanium Series . . . . .	11
Sky Pro Series . . . . .	13
Multi Split Units . . . . .	15
Multi Split Series . . . . .	17
Ducted Units . . . . .	21
SD Premium . . . . .	23
TD Prime . . . . .	25
Jupiter Plus (Cooling Only) . . . . .	27
Saturn Front Return . . . . .	29
Saturn Top Discharge . . . . .	31
Package Units . . . . .	33
PTAC . . . . .	35
Accessories . . . . .	37
VRF Systems . . . . .	39
Export Only Products . . . . .	41
Factory Warranty . . . . .	43

# About Us

Air-Con International has been providing quality air-conditioning products for residential and commercial customers since 2002. We are experienced in ductless & beyond! With over 20 years of industry experience, Air-Con air-conditioning systems have been crafted to meet and exceed industry standards. Our products are AHRI certified and a variety are Energy Star certified. Our stores and network of dealers provide easy access to Air-Con products anywhere within the contiguous United States. International products for export only to the Caribbean and Latin America are also available.





# Single-Zone Ductless





Up to 23 SEER • From 9K to 24K BTU



Heat & Cool

Enjoy year round comfort with the ability to heat or cool your room or space. Can continue to heat in low ambient temperatures as low as -4 degrees Fahrenheit.



Inverter Technology

Units that use Inverter technology are more energy efficient than traditional ACs. This energy efficiency translates to extended unit life, quiet operation, and lower electricity bills.



Warranty

Each unit has 5 years for parts and 7 years for the compressor. Warranty registration is required.

www.airconint.com

5



# Blue 3 Series



## Specs

Model		Unit	ABXC14H4S09 ABXEM4H4S09	ABXC14H4S12 ABXEM4H4S12	ABXC14H4S18 ABXEM4H4S18	ABXEM4H4S24 ABXEM4H4S24
Power Supply		V/Ph/Hz	208-230V/1Ph/60Hz			
Cooling Capacity (Min-Max)		Btu/h	9,000 (3,600-10,000)	12,000 (4,000-13,500)	18,000 (6,500-19,500)	24,000 (8,000-26,500)
Heating Capacity (Min-Max)		Btu/h	9,550 (3,600-10,500)	13,000 (4,000-14,000)	19,000 (6,500-20,000)	24,500 (8,000-26,500)
Cooling Power Input		W	655	960	1,385	1,880
Heating Power Input		W	720	1110	1,638	2,500
Cooling Current Input		A	2.9	4.3	6.3	8.3
Heating Current Input		A	2.9	5	7.2	11.1
Air Flow Volume		CFM	341	365	647	706
Dehumidification Volume		Pint/h	1.90	2.54	3.17	5.07
EER		(Btu/h)/W	13.7	12.5	13	12.5
SEER		-	22.5	20	23.3	21
INDOOR UNIT	Sound Pressure Level (SH/H/M/L)	dB(A)	39/32/29/26	39/32/29/26	45/41/37/34	47/42/36/33
	Dimension (WxHxD)	inch	32 7/8 x 11 x 8 11/16	32 7/8 x 11 x 8 11/16	43 5/16 x 12 13/16 x 9 5/8	43 5/16 x 12 13/16 x 9 5/8
	Package Dimension (WxHxD)	inch	34 1/4 x 13 3/16 x 10 7/16	34 1/4 x 13 3/16 x 10 7/16	46 1/16 x 15 3/8 x 12 7/16	46 1/16 x 15 3/8 x 12 7/16
	Net Weight	lb	18.74	19.84	32	32
	Gross Weight	lb	24.25	24.25	37.5	37.5
OUTDOOR UNIT	Sound Power Level	dB(A)	53	53	55	58
	Dimension (WxHxD)	inch	28 1/8 x 19 x 9 7/16	31 7/8 x 23 x 11	33 7/8 x 25 9/16 x 12 3/16	34 7/8 x 31 5/16 x 14 3/8
	Package Dimension (WxHxD)	inch	32 11/16 x 20 7/8 x 13 3/8	37 x 25 3/16 x 15 3/16	39 3/16 x 28 3/4 x 17 1/2	41 11/32 x 35 x 19 11/16
	Net Weight	lb	59.52	72.75	99	134.5
	Gross Weight	lb	63.93	79.36	108	144.4
	Refrigerant	-	R410A	R410A	R410A	R410A
PIPE CONNECTION	Connection Pipe Length	ft	15'	15'	24.6	24.6
	Outer Diameter Liquid Pipe	inch	1/4	1/4	1/4	3/8
	Outer Diameter Gas Pipe	inch	3/8	3/8	1/2	5/8





Serene  
series



TOKYO

Up to 18 SEER • From 9K to 24K BTU



Heat & Cool

Enjoy year round comfort with the ability to heat or cool your room or space. Can continue to heat in low ambient temperatures as low as -4 degrees Fahrenheit.

*Inverter*

Inverter  
Technology

Units that use Inverter technology are more energy efficient than traditional ACs. This energy efficiency translates to extended unit life, quiet operation, and lower electricity bills.



Warranty

Each unit has 5 years for parts and 7 years for the compressor. Warranty registration is required.

www.airconint.com

7





# Serene Series



## Specs

Model		Unit	ASRCI4H4S09 ASREM4H4S09	ASRCI4H4S12 ASREM4H4S12	ASRCI4H4S18 ASREM4H4S18	ASRCI4H4S24 ASREM4H4S24
Power Supply		V/Ph/Hz	208-230 / 1 /60	208-230 / 1 /60	208-230 / 1 /60	208-230 / 1 /60
Cooling Capacity (Min-Max)		Btu/h	9,000 (4,500-10,000)	12,000 (5,500-13,500)	18,000 (6,500-19,500)	24,000 (8,000-26,500)
Heating Capacity (Min-Max)		Btu/h	10,000 (4,500-10,000)	13,000 (5,500-13,500)	20,000 (6,000-21,500)	24,500 (8,000-26,500)
Cooling Power Input		W	820	1120	1700	2290
Heating Power Input		W	860	1110	2000	2280
Cooling Current Input		A	3.7	5	7.6	10.5
Heating Current Input		A	3.9	5	9	10.4
Air Flow Volume		CFM	323	364	588	676
Dehumidification Volume		Pint/h	1.90	2.54	4.23	5.07
EER		(Btu/h)/W	10.98	10.71	10.59	10.48
SEER		-	16.3	16.7	17.6	17.6
INDOOR UNIT	Sound Pressure Level (SH/H/M/L)	dB(A)	39/36/33/26	40/36/33/26	45/43/38/35	48/45/40/36
	Dimension (WxHxD)	inch	29 5/16 x 10 5/8 x 8 7/16	32 1/16 x 10 5/8 x 8 7/16	36 x 12 3/8 x 9 5/16	42 3/4 x 12 3/8 x 9 5/16
	Package Dimension (WxHxD)	inch	31 1/2 x 13 3/16 x 10 7/16	34 1/4 x 13 3/16 x 10 7/16	39 3/8 x 15 3/8 x 12 3/8	46 1/16 x 15 3/8 x 12 7/16
	Net Weight	lb	18.74	19.84	27.56	33.07
	Gross Weight	lb	22.05	24.25	31.97	37.48
OUTDOOR UNIT	Dimension (WxHxD)	inch	28 1/8 x 19 x 9 7/16	28 1/8 x 19 x 9 7/16	31 7/8 x 23 x 11	33 7/8 x 25 9/16 x 12 3/16
	Package Dimension (WxHxD)	inch	32 11/16 x 20 7/8 x 13 3/8	32 11/16 x 20 7/8 x 13 3/8	37 x 25 3/16 x 15 3/16	39 3/16 x 28 3/4 x 17 1/2
	Net Weight	lb	55.12	59.52	85.98	110.23
	Gross Weight	lb	59.52	66.14	92.59	119.05
	Refrigerant	-	R410A	R410A	R410A	R410A
PIPE CONNECTION	Connection Pipe Length	ft	15	15	15	15
	Outer Diameter Liquid Pipe	inch	1/4	1/4	1/4	3/8
	Outer Diameter Gas Pipe	inch	3/8	3/8	1/2	5/8





# ECLIPSE

series



Up to 19 SEER - 30K & 36K BTU



Heat & Cool

Enjoy year round comfort with the ability to heat or cool your room or space. Can continue to heat in low ambient temperatures as low as -4 degrees Fahrenheit.



Inverter  
Technology

Units that use Inverter technology are more energy efficient than traditional ACs. This energy efficiency translates to extended unit life, quiet operation, and lower electricity bills.



Warranty

Each unit has 5 years for parts and 7 years for the compressor. Warranty registration is required.



# Eclipse Series



## Specs

Model		Unit	ASPCI4H4S30 ASPEM4H4S30	ASPCI4H4S36R ASPEM4H4S36R
Power Supply		V/Ph/Hz	208-230V/1Ph/60Hz	
Cooling Capacity (Min-Max)		Btu/h	30,000 (11,500-33,500)	35,000 (12,000-37,000)
Heating Capacity (Min-Max)		Btu/h	31,000 (11,500-33,500)	35,000 (12,000-38,000)
Cooling Power Input		W	3,000	4,200
Heating Power Input		W	2,839	3,500
Cooling Current Input		A	2.3-15	2.5-18.5
Air Flow Volume		CFM	1218	1353
Dehumidification Volume		Pint/h	6.34	6.76
EER		(Btu/h)/W	10.00	8.33
SEER		-	18.8	16.4
INDOOR UNIT	Sound Pressure Level (H/M/L/S)	dB(A)	50/45/40/38	52/50/45/40
	Dimension (WxHxD)	inch	50 3/8 x 14 3/16 x 10 1/4	50 3/8 x 14 3/16 x 10 1/4
	Package Dimension (WxHxD)	inch	54 1/2 x 17 1/8 x 12 13/16	54 1/2 x 17 1/8 x 12 13/16
	Net Weight	lb	39.68	40.78
	Gross Weight	lb	47.39	48.5
OUTDOOR UNIT	Sound Pressure Level	dB(A)	60	60
	Dimension (WxHxD)	inch	34 7/8 x 31 5/16 x 14 3/8	34 7/8 x 31 5/16 x 14 3/8
	Package Dimension (WxHxD)	inch	41 11/32 x 35 x 19 11/16	41 11/32 x 35 x 19 11/16
	Net Weight	lb	127.86	141.1
	Gross Weight	lb	138.89	152.11
	Refrigerant	-	R410A	R410A
PIPE CONNECTION	Refrigerant Charge	oz	73.00	81.13
	Connection Pipe Length	ft	15	15
	Connection Pipe Gas Additional Charge	oz/ft	0.322	0.322
	Outer Diameter Liquid Pipe	inch	3/8	3/8
	Outer Diameter Gas Pipe	inch	5/8	5/8
	Max Distance Height	ft	16.4	16.4
	Max Distance Length	ft	49.21	49.21



*Inverter*



**AHRI**  
AIR-CONDITIONING, HEATING,  
& REFRIGERATION INSTITUTE



# TITANIUM®

115v



Up to 19 SEER • 9K & 12K BTU • 115v



Heat & Cool

Enjoy year round comfort with the ability to heat or cool your room or space. Can continue to heat in low ambient temperatures as low as -4 degrees Fahrenheit.

*Inverter*

Inverter  
Technology

Units that use Inverter technology are more energy efficient than traditional ACs. This energy efficiency translates to extended unit life, quiet operation, and lower electricity bills.



Warranty

Each unit has 5 years for parts and 7 years for the compressor. Warranty registration is required.

www.airconint.com

11



# Titanium Series

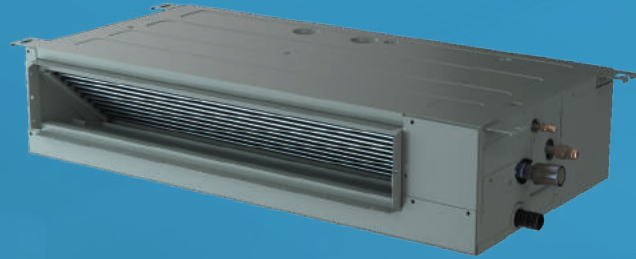


## Specs

Model		Unit	ATUCI4H1S09 ATUEM4H1S09	ATUCI4H1S12 ATUEM4H1S12
Power Supply		V/Ph/Hz	110-115 / 1 /60	110-115 / 1 /60
Cooling Capacity (Min-Max)		Btu/h	9,000 (1,200-10,000)	12,000 (2,500-13,500)
Heating Capacity (Min-Max)		Btu/h	9,500 (1,200-10,000)	13,000 (2,500-14,500)
Cooling Power Input		W	810	1200
Heating Power Input		W	810	1200
Cooling Current Input		A	7.4	10.8
Heating Current Input		A	7.4	10.8
Air Flow Volume		CFM	323	364
Dehumidification Volume		Pint/h	1.90	2.54
EER		(Btu/h)/W	11.11	10
SEER		-	19	18
INDOOR UNIT	Sound Pressure Level (H/M/L)	dB(A)	39/36/33	40/36/33
	Dimension (WxHxD)	inch	29 5/16 x 10 5/8 x 8 7/16	32 1/16 x 10 5/8 x 8 7/16
	Package Dimension (WxHxD)	inch	31 1/2 x 13 3/16 x 10 7/16	34 1/4 x 13 3/16 x 10 7/16
	Net Weight	lb	18.74	19.84
	Gross Weight	lb	22.05	24.25
OUTDOOR UNIT	Dimension (WxHxD)	inch	28 1/8 x 19 x 9 7/16	28 1/8 x 19 x 9 7/16
	Package Dimension (WxHxD)	inch	32 11/16 x 20 7/8 x 13 3/8	32 11/16 x 20 7/8 x 13 3/8
	Net Weight	lb	52.12	59.52
	Gross Weight	lb	59.52	66.14
	Refrigerant	-	R410A	R410A
PIPE CONNECTION	Connection Pipe Length	ft	15	15
	Outer Diameter Liquid Pipe	inch	1/4	1/4
	Outer Diameter Gas Pipe	inch	3/8	3/8



# SKY<sub>pro</sub>



Up to 23 SEER • From 9K to 36K BTU



Heat & Cool

Enjoy year round comfort with the ability to heat or cool your room or space. Can continue to heat in low ambient temperatures as low as -4 degrees Fahrenheit.



Inverter  
Technology

Units that use Inverter technology are more energy efficient than traditional ACs. This energy efficiency translates to extended unit life, quiet operation, and lower electricity bills.



Warranty

Each unit has 5 years for parts and 7 years for the compressor. Warranty registration is required.



# Sky Pro Series



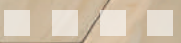
## Specs

Model	Unit	ASLEK4H4S09 ASLEC4H4S09 ASLCI4H4S09	ASLEK4H4S12 ASLEC4H4S12 ASLCI4H4S12	ASLEK4H4S18 ASLEC4H4S18 ASLCI4H4S18	ASLEK4H4S24 ASLEC4H4S24 ASLCI4H4S24	ASLEK4H4S36 ASLEC4H4S36 ASLCI4H4S36
Power Supply	V/Ph/Hz	208-230/1/60				
Cooling Capacity	Btu/h	9,000 (4,850-11,600)	12,000 (5,800-13,100)	18,000 (4,200-21,000)	24,000 (8,600-25,200)	36,000 (12,600-36,800)
Cooling Power Input	W	700	960	1420	1920	3380
Cooling Current Input	A	3.6	4.3	6.5	8.6	14.6
Heating Capacity (Min-Max)	Btu/h	10,000 (4,340-12,280)	12,000 (4,400-14,400)	19,000 (5,600-24,000)	24,000 (7,600-28,400)	36,000 (15,000-42,600)
Heating Power Input (Min-Max)	W	709	926	1,425	1,950	3,190
Heating Current Input	A	3.5	4.1	6.3	8.7	14
Air Flow Volume (H/M/L)	CFM	309/274/232	324/294/235	588/500/394	647/530/400	941//794/676
EER	(Btu/h)/W	12.86	12.5	12.68	12.5	10.65
SEER	-	22	23	22	19	19.5
CASSETTE UNIT	Sound Pressure Level (H/M/L)	dB(A) 38/34/31				
	Dimension (WxDxH)	inch 22 1/2 x 22 1/2 x 8 1/2				
	Package Dimension (WxDxH)	inch 28-3/4 x 26-1/4 x 11-1/2				
	Net Weight	lb 32				
DUCTED UNIT	Sound Pressure Level (H/M/L)	dB(A) 35/33/32				
	Dimension (WxHxD)	inch 35 7/8 x 7 1/2 x 17 5/8				
	Package Dimension (WxHxD)	inch 42 1/2 x 11 1/4 x 22 1/4				
	Net Weight	lb 39.7				
OUTDOOR UNIT	Sound Pressure Level	dB(A) 52				
	Dimension (WxHxD)	inch 31 7/8 x 22 7/8 x 11				
	Package Dimension (WxHxD)	inch 37 x 25 1/4 x 16 1/2				
	Net Weight	lb 75				
PIPE CONNECTION	Gross Weight	lb 83.8				
	Refrigerant	- R410A				
	Refrigerant Charge	oz 33.5				
	Connection Pipe Length	ft 25				
PIPE CONNECTION	Connection Pipe Gas Additional Charge	oz/ft 0.161				
	Outer Diameter Liquid Pipe	inch 1/4				
	Outer Diameter Gas Pipe	inch 3/8				
	Max Distance Height	ft 33				
Max Distance Length	ft 82					



Energy Star Qualified for  
Cassette Type Only







# Multi-Zone Ductless



# MULTISPLIT Series



Up to 22 SEER • From 18K to 42K BTU



Heat & Cool

Enjoy year round comfort with the ability to heat or cool your room or space. Build your multi-zone unit with compatible outdoor and indoor units.



Mix & Match

Mix & match compatible indoor units to complete your multi zone A/C system.



Warranty

Each unit has 5 years for parts and 7 years for the compressor. Warranty registration is required.



# Outdoor Unit Specs



Model		Unit	AMSCI4H4S18	AMSCI4H4S24	AMSCI4H4S36	AMSCI4H4S42
Power Supply		V/Ph/Hz	208-230/1/60	208-230/1/60	208-230/1/60	208-230/1/60
Cooling Capacity (Min-Max)		Btu/h	18,000 (7,500-24,000)	24,000 (8,000-30,200)	32,000 (12,000-42,000)	42,000 (9,000-50,000)
Cooling Current Input		A	6.5	8.7	11	17.5
Heating Capacity (Min-Max)		Btu/h	18,000 (5,800-28,700)	24,000 (5,200-37,000)	36,000 (8,000-52,000)	42,000 (9,000-52,000)
Heating Current Input		A	6.9	8.7	13	17
Air Flow Volume		CFM	1,850	2,350	3,411	3,411
EER		(Btu/h)/W	12.5	12.5	12.5	10.5
SEER		-	22	22	21	20
OUTDOOR UNIT	Sound Pressure Level	dB(A)	55	59	59	63
	Dimension (WxHxD)	inch	33-7/8 x 26-3/8 x 12-1/4	37-3/8 x 33 x 13-3/8	37-3/8 x 41-3/8 x 13-3/8	37-3/8 x 41-3/8 x 13-3/8
	Package Dimension (WxHxD)	inch	39 x 17-3/4 x 28-3/4	43-3/4 x 18-1/8 x 36-1/4	43-3/4 x 18-1/8 x 47-1/4	43-3/4 x 18-1/8 x 47-1/4
	Net Weight	lb	116.8	158.7	188.5	198.4
	Gross Weight	lb	125.6	169.5	220.5	224.5
PIPE CONNECTION	Refrigerant Charge	oz	63.49	81.13	105.82	120
	Outer Diameter Liquid Pipe	inch	1/4	1/4	1/4	1/4
	Outer Diameter Gas Pipe	inch	3/8	3/8	3/8	3/8

# Wall Mounted Unit Specs



Model		Unit	ABXEM4H4S09	ABXEM4H4S12	ABXEM4H4S18	ABXEM4H4S24
Power Supply		V/Ph/Hz	208-230/1/60	208-230/1/60	208-230/1/60	208-230/1/60
Cooling Capacity		Btu/h	9,000	12,000	18,000	23,400
Cooling Current Input		A	0.11	0.11	0.17	0.17
Heating Capacity		Btu/h	9,500	13,000	19,000	26,000
Air Flow Volume		CFM	341	365	647	706
OUTDOOR UNIT	Sound Pressure Level (H/M/L)	dB(A)	39/35/30	39/35/30	38/37/36	42/38/36
	Dimension (WxHxD)	inch	37-3/8x10-3/4 x 8-1/8	37-3/8 x 10-3/4 x 8-1/8	48 x 12-5/8 x 9-1/4	48 x 12-5/8 x 9-1/4
	Package Dimension (WxHxD)	inch	39-3/8 x 13-3/16 x 6-3/8	39-3/8 x 13-3/16 x 6-3/8	51-3/4 x 15-7/16 x 12-1/2	51-3/4 x 15-7/16 x 12-1/2
	Net Weight	lb	19.84	19.84	31.97	31.97
	Gross Weight	lb	24.25	24.25	37.48	37.48
PIPE CONNECTION	Outer Diameter Liquid Pipe	inch	1/4	1/4	1/4	3/8
	Outer Diameter Gas Pipe	inch	3/8	3/8	1/4	5/8



# Ducted Unit Specs

Model		Unit	ASLEK4H4S09	ASLEK4H4S12	ASLEK4H4S18	ASLEK4H4S24
Power Supply		V/Ph/Hz	208-230/1/60	208-230/1/60	208-230/1/60	208-230/1/60
Cooling Capacity		Btu/h	9,000	12,000	18,000	24,000
Cooling Current Input		A	0.25	0.25	0.33	0.5
Heating Capacity		Btu/h	10,000	12,500	19,000	24,000
Air Flow Volume		CFM	306	353	529	706
OUTDOOR UNIT	Sound Pressure Level (H/M/L)	dB(A)	35/33/32	36/34/33	38/37/36	42/38/36
	Dimension (WxHxD)	inch	35-7/8 x 7-7/16 x 17-1/2	35-7/8 x 7-7/16 x 17-1/2	46-7/16 x 7-1/2 x 17-1/2	35-3/8 x 10-5/8 x 28-3/8
	Package Dimension (WxHxD)	inch	42-1/2 x 11-1/4 x 22-1/4	42-1/2 x 11-1/4 x 22-1/4	53-1/8 x 11-1/4 x 22-1/4	46 x 13-3/8 x 34-1/4
	Net Weight	lb	18	18	22.5	30
	Gross Weight	lb	21	21	25.5	35
PIPE CONNECTION	Outer Diameter Liquid Pipe	inch	1/4	1/4	1/4	3/8
	Outer Diameter Gas Pipe	inch	3/8	3/8	1/2	5/8

# Cassette Unit Specs



Model		Unit	ASLEC4H4S09	ASLEC4H4S12	ASLEC4H4S18	ASLEC4H4S24
Power Supply		V/Ph/Hz	208-230/1/60	208-230/1/60	208-230/1/60	208-230/1/60
Cooling Capacity		Btu/h	9,000	12,000	18,000	23,400
Cooling Current Input		A	0.25	0.25	0.4	0.4
Heating Capacity		Btu/h	10,200	13,500	19,000	27,000
Air Flow Volume		CFM	306	353	559	647
OUTDOOR UNIT	Sound Pressure Level (H/M/L)	dB(A)	38/34/31	42/37/33	38/36/34	44/40/38
	Dimension (WxHxD)	inch	22-7/16 x 8-7/16X22-7/16	22-7/16 x 8-7/16X22-7/16	33 x 9-3/4 x 33	33 x 9-3/4 x 33
	Package Dimension (WxHxD)	inch	28-3/4 x 11-1/2 x 26-5/16	28-3/4 x 11-1/2 x 26-5/16	39-1/4 x 37-1/16 x 14-9/16	39-1/4 x 37-1/16 x 14-9/16
	Net Weight	lb	14.5	15.5	22.5	27
	Gross Weight	lb	38.5	40.5	73.8	79.5
PIPE CONNECTION	Outer Diameter Liquid Pipe	inch	1/4	1/4	1/4	3/8
	Outer Diameter Gas Pipe	inch	3/8	3/8	1/2	5/8



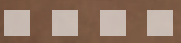
# MULTISPLIT Series

5 can connect up to UNITS





# Ducted Units



COFFEE

ESPRESSO

DOUBLE SHOT 2.75  
 CORTADO 2.00  
 LATTE 2.75  
 MINTO LATE 3.75  
 FRESH BREWED BEER 4.00  
 HOTWA 1.50  
 AMERICANO 1.50

TEA

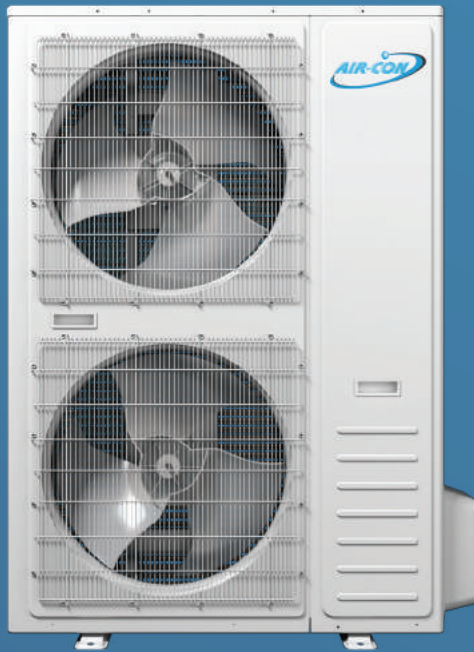
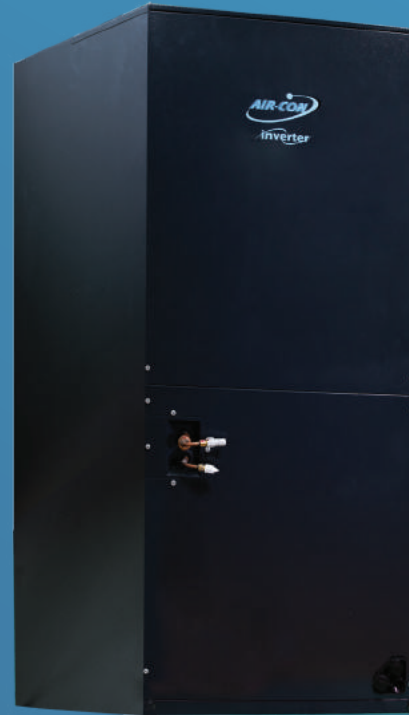
HOT TEA 1.50  
 ICED TEA 2.00  
 TEALATTE 3.25  
 CHAI TEALATTE 3.25

HOT CHOCOLATE

1.50

Sip sip

post cards



# SD-Premium



18 SEER • From 24K to 60K BTU



Heat & Cool

Heat pump air conditioners can both heat and cool. The SD Premium Series can work in low ambient temperatures as well (5° F for cooling and -13° F for heating).



Inverter  
Technology

Units that use Inverter technology are more energy efficient than traditional ACs. This energy efficiency translates to extended unit life, quiet operation, and lower electricity bills.



Warranty

Each unit has 10 years for parts and 10 years for the compressor. Warranty registration is required.

www.airconint.com

23





# SD Premium



## Specs

Model		Unit	ASDDI4H4S24 / ASDVI4H4S24	ASDDI4H4S36 / ASDVI4H4S36	ASDDI4H4S48 / ASDVI4H4S48	ASDDI4H4S60 / ASDVI4H4S60
Power Supply		V/Ph/Hz	208-230 / 1 / 60			
Cooling Capacity (Min-Max)		Btu/h	24000 (6,700-26,000)	36000 (11,800-36,800)	48000 (18,300-52,000)	56000 (18,300-59,400)
Cooling Power Input		W	2200	3730	4690	6560
Cooling Current Input		A	9.6	16.5	21	26.8
Heating Capacity (Min-Max)		Btu/h	24,000 (6,700-26,000)	36,000 (8,900-38,200)	48,000 (17,600-52,000)	56,000 (17,600-57,000)
Heating Power Input		W	2000	3200	4260	5290
Heating Current Input		A	8.7	14.1	19	21
Air Flow Volume		CFM	800	1120	1588	1706
Dehumidification Volume		Pint/h	4.64	9.51	11.6	15.8
EER		(Btu/h)/W	10.9	9.55	10.24	8.55
SEER		-	18	18	18	17.5
INDOOR UNIT	Sound Pressure Level	dB(A)	55	57	64	65
	Dimension (WxHxD)	inch	19 5/8 × 46 1/8 × 21 5/8	19 5/8 × 46 1/8 × 21 5/8	22 × 53-7/8 × 24	22 × 53 7/8 × 24
	Package Dimension (WxHxD)	inch	22 1/2 × 49 5/8 × 25 3/8	22 1/2 × 49 5/8 × 25 3/8	25-1/4 × 55-1/2 × 28	25 7/4 × 55 1/2 × 28
	Net Weight	lb	135.5	140	187.2	187.2
	Gross Weight	lb	158.6	163.1	214	214
OUTDOOR UNIT	Sound Pressure Level	dB(A)	54	56	59	60
	Dimension (WxHxD)	inch	33 7/8 × 26 3/8 × 12 1/4	37 3/8 × 33 × 13 3/8	37-3/8 × 54-5/8 × 13-3/8	37 3/8 × 54 5/8 × 13-3/8
	Package Dimension (WxHxD)	inch	39 × 28 3/4 × 17 3/4	43 3/4 × 36 1/4 × 18 1/8	43-3/4 × 60-1/4 × 18-1/8	43 3/4 × 60 1/4 × 18 1/8
	Net Weight	lb	112	148	227.1	251
	Gross Weight	lb	121	159	253.5	278
Refrigerant		-	R-410A	R-410A	R-410A	R-410A
PIPE CONNECTION	Refrigerant Charge	oz	70.5	98.7	142.9	143
	Connection Pipe Length	ft	25	25	25	25
	Connection Pipe Gas Additional Charge	oz/ft	0.38	0.38	0.6	0.6
	Outer Diameter Liquid Pipe	inch	3/8	3/8	3/8	3/8
	Outer Diameter Gas Pipe	inch	5/8	3/4	7/8	7/8
	Max Distance Height	ft	98	98	98	98
	Max Distance Length	ft	164	246	246	246



# TD-PRIME



18 SEER • From 24K to 60K BTU



Heat & Cool

Heat pump air conditioners can both heat and cool.



Energy Savings

With a SEER up to 18 rating, you can save money on your monthly electricity bill compared to older installations.



Warranty

Each unit has 10 years for parts and 10 years for the compressor. Warranty registration is required.

www.airconint.com

25





# TD Prime



## Heat Pump Specs

Model		Unit	ATDCI4H4G24 ATDEM4H4G24	ATDCI4H4G36 ATDEM4H4G36	ATDCI4H4G48 ATDEM4H4G48	ATDCI4H4G60 ATDEM4H4G60
Power Supply		V/Ph/Hz	208-230/1/60	208-230/1/60	208-230/1/60	208-230/1/60
Heating Capacity (Min-Max)		Btu/h	24,000	34,500	46,500	56,000
EER		(Btu/h)/W	11.6	11.6	11.6	10.8
SEER		-	17.5	17.5	17.5	17.5
INDOOR UNIT	Dimension (WxHxD)	inch	20 x 46 x 22	20 x 46 x 22	22 x 53 x 24	22 x 53 x 24
	Package Dimension (WxHxD)	inch	23 x 48 x 26	23 x 48 x 26	26 x 55 x 28	26 x 55 x 28
OUTDOOR UNIT	Refrigerant	-	R410A	R410A	R410A	R410A
	Dimension (WxHxD)	inch	29 x 25 x 29	29 x 25 x 29	29 x 33 x 29	29 x 33 x 29
	Package Dimension (WxHxD)	inch	30 x 26 x 30	30 x 26 x 30	30 x 35 x 30	30 x 35 x 30





# JUPITER<sub>PLUS</sub>

SERIES



15 SEER • From 18K to 60K BTU



Cooling Only

The Jupiter Series is a cooling only traditional on/off system. This central a/c unit is available from 18K to 60K BTU.



Warranty

Each unit has 10 years for parts and 10 years for the compressor. Warranty registration is required.



# Jupiter Plus

## (Cooling Only)



## ODU Specs

Model			ALXCV4C4G18	ALXCV4C4G24	ALXCV4C4G30	ALXCV4C4G36	ALXCV4C4G48	ALXCV4C4G60
Outdoor power supply		V/Ph/Hz	230V/1N/60HZ	230V/1N/60HZ	230V/1N/60HZ	230V/1N/60HZ	230V/1N/60HZ	230V/1N/60HZ
Cooling	Capacity	Btu/h	17600	23600	28000	33000	47000	56000
	Input	W	1504	2017	2393	2821	4196	5000
	EER2	Btu/h.W	11.70	11.70	11.70	11.70	11.20	11.20
	SEER2	Btu/h.W	14.30	14.30	14.30	14.30	13.80	13.80
Max. input consumption		W	1880	2521	2991	3526	5246	6250
Max. current		A	8.61	11.54	13.69	16.14	24.01	28.60
Outdoor air flow		CFM	1780	1990	3350	3350	3820	3820
Outdoor dimension	Unit (WxHxD)	in	21-4/5×25×21-4/5	21-4/5×25×21-4/5	29-1/7×25×29-1/7	29-1/7×25×29-1/7	29-1/7×32-7/8×29-1/7	29-1/7×32-7/8×29-1/7
		mm	554×633×554	554×633×554	740×633×740	740×633×740	740×835×740	740×835×740
	Packing (WxHxD)	in	22-3/5×25-9/10×22-3/5	22-3/5×25-9/10×22-3/5	29-9/10×25-9/10×29-9/10	29-9/10×25-9/10×29-9/10	29-9/10×34-2/5×29-9/10	29-9/10×34-2/5×29-9/10
		mm	575×660×575	575×660×575	760×660×760	760×660×760	760×875×760	760×875×760
Net / Gross weight		kg	47/49	55/57	69/72	70/74	94/98	101/104
		lbs	101/106	115/119	150/156	157/163	185/196	207/216
Refrigerant	Type		R410A	R410A	R410A	R410A	R410A	R410A
	Charging	oz	84.65	98.76	111.11	112.87	144.62	185.18
Refrigerant pipe	Liquid side	in	Φ3/8	Φ3/8	Φ3/8	Φ3/8	Φ3/8	Φ3/8
	Gas side	in	Φ3/4	Φ3/4	Φ3/4	Φ3/4	Φ7/8	Φ7/8
	Max. refrigerant pipe length	ft	50	50	50	50	66	66
	Max. difference in level	ft	26	26	26	26	33	33

## IDU Specs

Model			ALXEM4H4G18	ALXEM4H4G24	ALXEM4H4G30	ALXEM4H4G36	ALXEM4H4G48	ALXEM4H4G60
Power supply		V/Ph/Hz	208-230V/1N/60Hz	208-230V/1N/60Hz	208-230V/1N/60Hz	208-230V/1N/60Hz	208-230V/1N/60Hz	208-230V/1N/60Hz
Capacity		Btu/h	17600	23600	28000	33000	47000	56000
Indoor air flow		CFM	678	742	1042	1042	1363	1580
Indoor noise level		dB(A)	50	54	56	56	57	60
Unit (WxHxD)		in	19-2/3×45-3/4×22	19-2/3×45-3/4×22	19-2/3×45-3/4×22	19-2/3×45-3/4×22	22×53-1/8×24	22×53-1/8×24
		mm	500×1162×560	500×1162×560	500×1162×560	500×1162×560	560×1350×623	560×1350×623
Indoor dimension	Packing (WxHxD)	in	22-5/6×47-5/8×25-3/5	22-5/6×47-5/8×25-3/5	22-5/6×47-5/8×25-3/5	22-5/6×47-5/8×25-3/5	28×54-3/4×25-1/5	28×54-3/4×25-1/5
		mm	580×1210×650	580×1210×650	580×1210×650	580×1210×650	710×1390×640	710×1390×640
Net / Gross weight		kg	56/61	59/64	60/65	61/66	80/86	80/86
		lbs	123/134	130/141	132/143	134/146	176/190	176/190





15 SEER • From 18K to 36K BTU



Heat & Cool

Heat Pump air conditioners can both heat and cool. All models are SEER2 compliant.



Accepts Any Standard Thermostat

The Saturn Series units are equipped to connect easily to standard home thermostats.



Warranty

Each unit has 10 years for parts and 10 years for the compressor. Warranty registration is required.

www.airconint.com

29



# Saturn Series Front Return



## Condenser (ODU Specs)

Model			ATSCV4H4T18	ATSCV4H4T24	ATSCV4H4T30	ATSCV4H4T36
Outdoor power supply		V/Ph/Hz	230V/1N/60HZ	230V/1N/60HZ	230V/1N/60HZ	230V/1N/60HZ
Cooling	Capacity	Btu/h	17500	22000	28000	33000
	Input	W	1550	2000	2370	2780
	EER2	Btu/h.W	11.50	11.20	11.50	11.50
	SEER2 (AHRI Certified)	Btu/h.W	14.3	14.3	14.3	14.3
Heating	Capacity	Btu/h	17500	22000	26000	33000
	HSPF2(AHRI Certified)	Btu/h.W	7.50	7.50	7.50	7.50
Max. input consumption		W	2250.00	3050.00	3300.00	4455.00
Max. current		A	11.50	15.00	17.00	23.00
Outdoor air flow		CFM	2000	2000	2250	2750
Outdoor sound pressure level		dB(A)	60	60	63	63
Outdoor dimension	Unit (W*H*D)	in	23-3/5×25×23-3/5	23-3/5×25×23-3/5	23-3/5×25×23-3/5	29-1/7×25×29-1/7
		mm	600×633×600	600×633×600	600×633×600	740×633×740
	Packing (W*H*D)	in	24-4/5×26-1/5×24-4/5	24-4/5×26-1/5×24-4/5	24-4/5×26-1/5×24-4/5	30-3/10×26-1/5×30-3/10
		mm	630×665×630	630×665×630	630×665×630	770×665×770
	Net / Gross weight	kg	57.5/60	58.5/61	66/68.5	75.5/78.5
		lbs	127/132	129/134	146/151	166/173
Refrigerant	Type		R410A	R410A	R410A	R410A
	Charging volume	oz	93.50	98.80	105.80	123.50
	Liquid side	in	Φ3/8	Φ3/8	Φ3/8	Φ3/8
Refrigerant pipe	Gas side	in	Φ3/4	Φ3/4	Φ3/4	Φ3/4
	Max. refrigerant pipe length	ft	148	148	148	148
	Max. difference in level	ft	66	66	66	66

## Front Return Air Handler (IDU Specs)

Model			ATSFR4H4T18	ATSFR4H4T24	ATSFR4H4T30	ATSFR4H4T36
Power supply		V/Ph/Hz	208~230V/1N/60Hz	208~230V/1N/60Hz	208~230V/1N/60Hz	208~230V/1N/60Hz
Cooling	Capacity	Btu/h	17500	22000	28000	33000
	SEER2	Btu/h.W	14.30	14.30	14.30	14.30
Indoor air flow		CFM	715	805	1020	1145
Indoor sound pressure level		dB(A)	/	/	/	/
Indoor dimension	Unit (W*H*D)	in	20-3/5×36×15	20-3/5×36×15	22-1/10×39-3/5×19	22-1/10×39-3/5×19
		mm	524×915×381	524×915×381	562×1006×485	562×1006×485
	Packing (W*H*D)	in	23-1/5×39-2/5×17-7/10	23-1/5×39-2/5×17-7/10	24-3/5×42-9/10×21-3/5	24-3/5×42-9/10×21-3/5
		mm	590×1000×450	590×1000×450	625×1090×550	625×1090×550
	Net / Gross weight	kg	40/44	40/44	51/56	51/56
		lbs	88/97	88/97	112/123	112/123
Refrigerant pipe	Liquid side	in	3/8	3/8	3/8	3/8
	Gas side	in	3/4	3/4	3/4	3/4





15 SEER • From 18K to 60K BTU



Heat & Cool

Heat Pump air conditioners can both heat and cool. All models are SEER2 compliant.



Accepts Any Standard Thermostat

The Saturn Series units are equipped to connect easily to standard home thermostats.



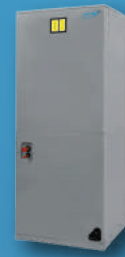
Warranty

Each unit has 10 years for parts and 10 years for the compressor. Warranty registration is required.





# Saturn Series Top Discharge



## Condenser (ODU Specs)

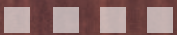
Model			ATSCV4H4T18	ATSCV4H4T24	ATSCV4H4T30	ATSCV4H4T36	ATSCV4H4T42	ATSCV4H4T48	ATSCV4H4T60
Outdoor power supply		V/Ph/Hz	230V/1N/60HZ	230V/1N/60HZ	230V/1N/60HZ	230V/1N/60HZ	230V/1N/60HZ	230V/1N/60HZ	230V/1N/60HZ
Cooling	Capacity	Btu/h	17500	22000	28000	33000	40000	45000	56000
	Input	W	1550	2000	2370	2780	3400	3770	4870
	EER2	Btu/h.W	11.50	11.20	11.50	11.50	11.50	11.50	11.50
	SEER2 (AHRI Certified)	Btu/h.W	14.3	14.3	14.3	14.3	14.3	14.3	14.3
Heating	Capacity	Btu/h	17500	22000	26000	33000	40000	44000	53000
	HSPF2(AHRI Certified)	Btu/h.W	7.50	7.50	7.50	7.50	7.50	7.50	7.50
Max. input consumption		W	2250.00	3050.00	3300.00	4455.00	5430.00	6000.00	7300.00
Max. current		A	11.50	15.00	17.00	23.00	28.00	29.50	37.00
Outdoor air flow		CFM	2000	2000	2250	2750	3300	4000	4000
Outdoor sound pressure level		dB(A)	60	60	63	63	65	65	63
Outdoor dimension	Unit (W*H*D)	in	23-3/5*25*23-3/5	23-3/5*25*23-3/5	23-3/5*25*23-3/5	29-17*25*29-17	29-17*32-7/8*29-17	29-17*32-7/8*29-17	29-17*32-7/8*29-17
		mm	600*633*600	600*633*600	600*633*600	740*633*740	740*835*740	740*835*740	740*835*740
	Packing (W*H*D)	in	24-4/5*26-1/5*24-4/5	24-4/5*26-1/5*24-4/5	24-4/5*26-1/5*24-4/5	30-3/10*26-1/5*30-3/10	30-3/10*34-4/5*30-3/10	30-3/10*34-4/5*30-3/10	30-3/10*34-4/5*30-3/10
		mm	630*665*630	630*665*630	630*665*630	770*665*770	770*885*770	770*885*770	770*885*770
	Net / Gross weight	kg	57.5/60	58.5/61	66/68.5	75.5/78.5	94/99	97/102	104/109
		lbs	127/132	129/134	146/151	166/173	207/218	214/225	229/240
Refrigerant	Type		R410A	R410A	R410A	R410A	R410A	R410A	R410A
	Charging volume	oz	93.50	98.80	105.80	123.50	151.70	162.30	197.50
Refrigerant pipe	Liquid side	in	Φ3/8	Φ3/8	Φ3/8	Φ3/8	Φ3/8	Φ3/8	Φ3/8
	Gas side	in	Φ3/4	Φ3/4	Φ3/4	Φ3/4	Φ3/4	Φ7/8	Φ7/8
	Max. refrigerant pipe length	ft	148	148	148	148	148	148	148
	Max. difference in level	ft	66	66	66	66	66	66	66

## Standard Split Air Handler (IDU Specs)

Model			ATSEM4H4T18	ATSEM4H4T24	ATSEM4H4T30	ATSEM4H4T36	ATSEM4H4T42	ATSEM4H4T48	ATSEM4H4T60
Power supply		V/Ph/Hz	208-230V/1N/60Hz	208-230V/1N/60Hz	208-230V/1N/60Hz	208-230V/1N/60Hz	208-230V/1N/60Hz	208-230V/1N/60Hz	208-230V/1N/60Hz
Cooling	Capacity	Btu/h	17500	22000	28000	33000	40000	45000	55500
	SEER2	Btu/h.W	14.30	14.30	14.30	14.30	14.30	13.80/14.30	13.80/14.30
Indoor air flow		CFM	580	800	980	1150	1280	1580	1570
Indoor sound pressure level		dB(A)	/	/	/	/	/	/	/
Indoor dimension	Unit (W*H*D)	in	19-2/3*45-3/4*22	19-2/3*45-3/4*22	19-2/3*45-3/4*22	19-2/3*45-3/4*22	19-2/3*45-3/4*22	22*53-1/8*24	22*53-1/8*24
		mm	500*1162*560	500*1162*560	500*1162*560	500*1162*560	500*1162*560	560*1350*623	560*1350*623
	Packing (W*H*D)	in	22-5/6*47-5/8*25-3/5	22-5/6*47-5/8*25-3/5	22-5/6*47-5/8*25-3/5	22-5/6*47-5/8*25-3/5	22-5/6*47-5/8*25-3/5	27-3/4*54-9/10*25-1/5	27-3/4*54-9/10*25-1/5
		mm	580*1210*650	580*1210*650	580*1210*650	580*1210*650	580*1210*650	705*1395*640	705*1395*640
	Net / Gross weight	kg	57/62	60/65	59/64	59/64	61/66	78/84	78/84
		lbs	126/137	132/143	130/141	130/141	134/146	172/185	172/185
Refrigerant pipe	Liquid side	in	3/8	3/8	3/8	3/8	3/8	3/8	3/8
	Gas side	in	3/4	3/4	3/4	3/4	3/4	7/8	7/8



# Package Units







9K • 12K • 15K BTU



Electric Heat & Wired  
Remote Ready

The Air-Con PTAC unit comes equipped with electric heat and easy connection for wired remotes. This unit can connect to standard thermostats.



Each unit has 2 years for parts and 5 years for the compressor. Warranty registration is required.



# PTAC



- Replacement Only
- No Wall Sleeve or Back Grille

## Specs

Model	Unit	APF4C4G09	APF4C4G12	APF4C4G15
Power Supply	V/Ph/Hz		208-230 / 1 / 60	
Cooling Capacity	Btu/h	9500/9300	12200/12000	14700/14500
Heating Capacity	Btu/h	10200/8300	10200/8300	17000/13900
Cooling Power Input	W	835/815	1140/1120	1470/1450
Heating Power Input	W	3050/2500	3050/2500	5050/4135
Cooling Current Input	A	13.2/12.0	13.2/12.0	21.9/19.8
Heating Current Input	A	13.2/12.0	13.2/12.0	21.9/19.8
Air Flow Volume (H/L)	CFM	412/365	471/412	471/412
EER	(Btu/h)/W	11.4/11.4	10.7/10.7	10.0/10.0
Dimension (WxHxD)	inch	42 x 21 x 16	42 x 21 x 16	42 x 21 x 16
Package Dimension (WxHxD)	inch	45 x 25 x 19	45 x 25 x 19	45 x 25 x 19
Net Weight	lb	95.9	101.41	106.92
Gross Weight	lb	106.92	112.43	117.94
Indoor Sound Pressure Level (H/L)	dB(A)	48/39	52/46	51/48
Outdoor Sound Power Level (H/L)	dB(A)	66	66	66
Refrigerant	-	R410A	R410A	R410A
Refrigerant Charge	oz	19.4	26.5	34.2



# Accessories

## Installation Kits

Installation kits come in two sizes:

- 15 feet
- 25 feet

Comes with insulated copper tubing and electrical wires.



## Wall Brackets

Our wall brackets are a one-size-fits-most model. One bracket can adjust to accommodate 9,000-24,000 BTU models.



## Universal Remote

QTH-4000 Universal remote works with 99% of existing mini split models. Use this to replace a broken or lost remote control.



## 410A Access Fitting

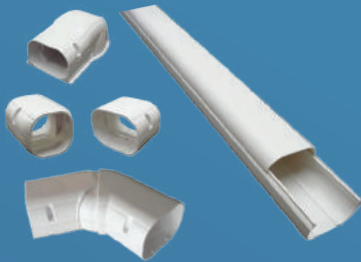
5/16" (1/2"-20) Female x 1/4" Male Adapter.





## Vacuum Pump

- High performance vacuum pump
- Anti-oil-return
- Environment Friendly



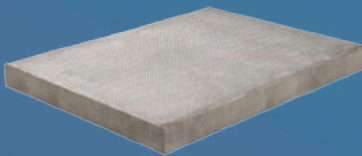
## Lineset Covers

Hide outdoor-facing tubing with covers for a more attractive outdoor space.



## Two Way Manifold

Works with all refrigerants. Easy to read color scales.



## Concrete Slab

Place outdoor unit on top of even ground with a concrete slab.

# VRF System

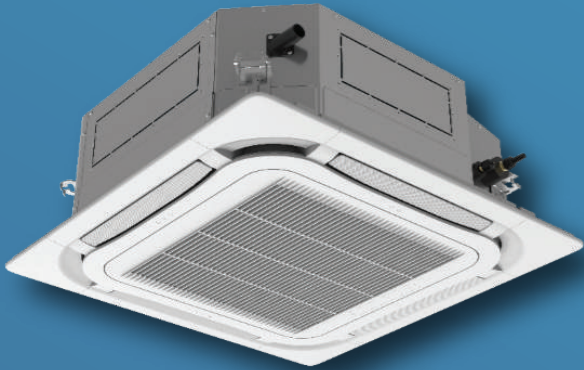
Up To 77 Tons







# Variety of Indoor Units for your VRF Systems



[www.airconcommercial.com](http://www.airconcommercial.com)



[www.airconint.com](http://www.airconint.com)

# Export Only Products

We offer Export Only products for the Caribbean  
& Latin America!



[www.airconint.com](http://www.airconint.com)



**mitsubishi**  
**HEAVY INDUSTRIES**





# Export Only Products



Contact us for more information and full product offerings

Email: [customerservice@airconint.com](mailto:customerservice@airconint.com)

Phone: (954) 771-1415

# Factory Warranty

Unit	Parts Warranty	Compressor Warrantanty
Mini Split Inverter (Blue Series 3)	5	7
Mini Split Inverter (Titanium Series)	5	7
Mini Split Inverter (Eclipse Series)	5	7
Mini Split Inverter (Serene Series)	5	7
Sky Pro Series	5	7
Multi-Split Inverter	5	7
Ducted (SD Premium)	10	10
Ducted (TD Prime)	10	10
Ducted (Jupiter Plus) (Cooling Only)	10	10
Ducted (Saturn Series)	10	10
All-In-One (PTAC)	2	5

The factory warranty is valid from the date of the seller's invoice date. Registration is required. Limited warranty applies to unregistered units. Warranty is subject to change.



Need Guides, Manuals and other Air-Con info?

Please visit the Air-Con International Support  
Wiki for wiring guides, specs and more!



[www.airconint.com/wiki](http://www.airconint.com/wiki)





## WARNINGS AND RECOMMENDATIONS:

Always use a licensed HVAC installer or contractor to install Air-Con products. Improper installation can lead to health hazards and property damage. Installation by an unlicensed HVAC installer will void any warranties attached to a product.

Please read the User's Manual before operation. The manual contains important information on usage and regular maintenance.

Any products featured in this catalog are subject to continuous changes. Air-Con reserves the right to modify the product design, specifications and information in this catalog without notice.



[www.airconint.com](http://www.airconint.com)

Miami Store  
7108 NW 50th St  
Miami, FL 33166  
Ph: 786-238-7234

Air-Con International, Inc.  
2031 SW 2nd St  
Pompano Beach, FL 33069  
954-771-1415

Broward Store  
2031 SW 2nd St  
Pompano Beach FL 33069  
Ph: 954-771-1415