



## Submittal Sheet

Submitted for:       Approval       Record

Job Name: \_\_\_\_\_

Date: \_\_\_\_\_

Contractor: \_\_\_\_\_

Location: \_\_\_\_\_

Engineer: \_\_\_\_\_

Tag: \_\_\_\_\_

### **15 SEER BLUE SERIES DC INVERTER**

**Outdoor Units: ACZCI4H4R09**

**Indoor Units: ACZEM4H4R09**

**ACZCI4H4R12**

**ACZEM4H4R12**

**ACZCI4H4R18**

**ACZEM4H4R18**

**ACZCI4H4R24**

**ACZEM4H4R24**

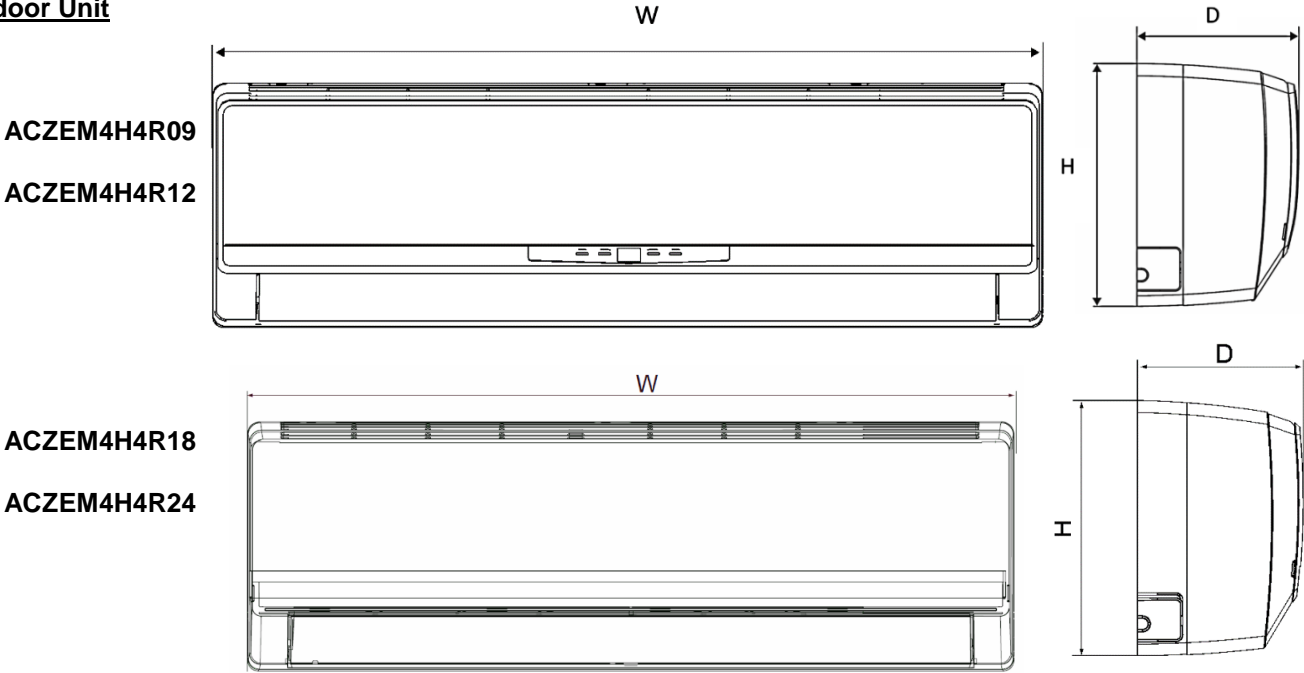
Notes: \_\_\_\_\_

\_\_\_\_\_

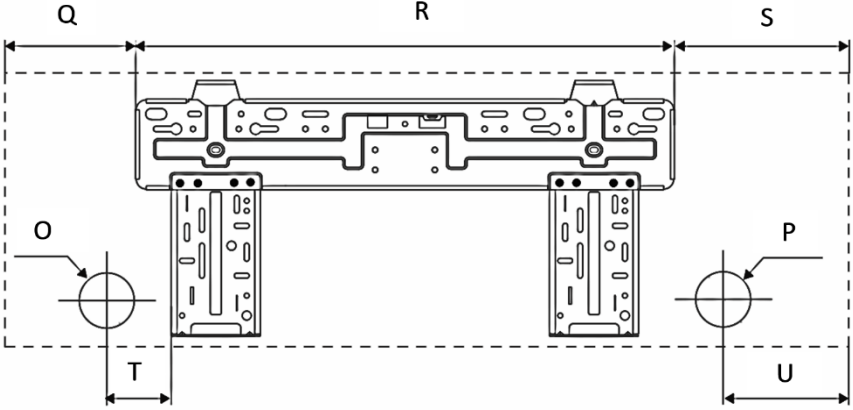
\_\_\_\_\_

Summary, Features, and Construction Views

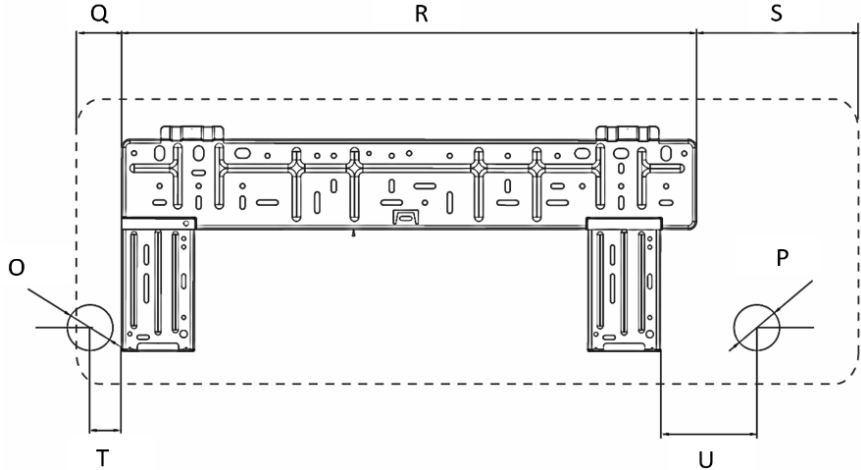
**Indoor Unit**



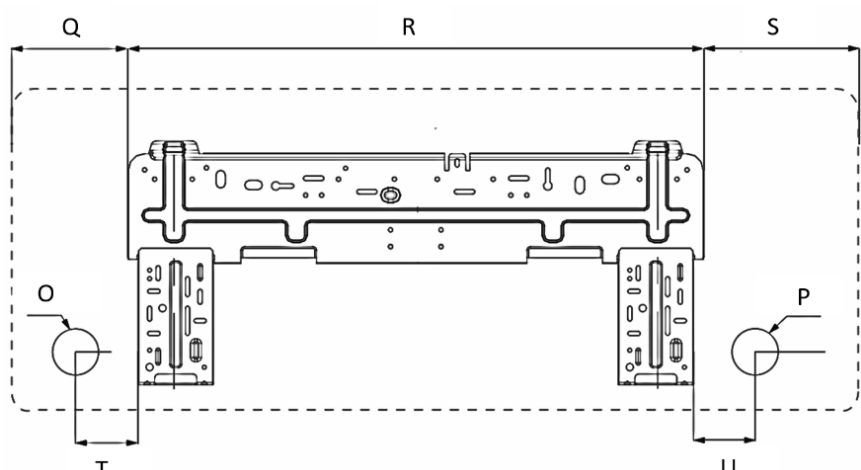
**09 & 12K Indoor Unit Wall Bracket:**



**18K Indoor Unit Wall Bracket:**



**24K Indoor Unit Wall Bracket:**

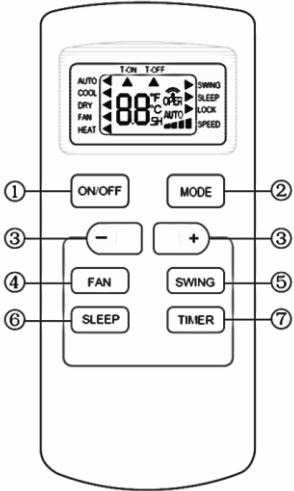


Unit: mm										
Model	W	H	D	O	P	Q	R	S	T	U
ACZEM4H4R09 ACZEM4H4R12	844.6	275.2	177.8	55.0	55.0	127.0	541.9	171.5	57.2	123.8
ACZEM4H4R18	939.8	296.3	203.2	55.0	55.0	50.8	694.3	194.7	31.0	98.0
ACZEM4H4R24	1008.7	315.0	218.4	69.9	69.9	137.9	685.8	185.1	88.9	64.9
Unit: Inches										
ACZEM4H4R09 ACZEM4H4R12	33.25	10 5/6	7	2 1/6	2 1/6	5	21 1/3	6.75	2.25	4 7/8
ACZEM4H4R18	37	11 2/3	8	2 1/6	2 1/6	2	27 1/3	7 2/3	1 2/9	3 6/7
ACZEM4H4R24	39 5/7	12 2/5	8 3/5	2.75	2.75	5 3/7	27	7 2/7	3.5	2 5/9

\*True dimensions in inches

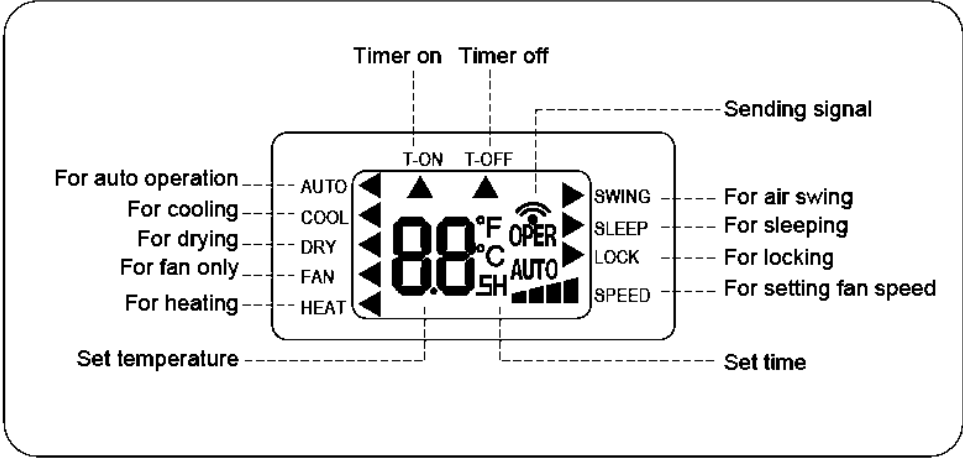
Summary, Features, and Construction Views

Remote Controller



1	ON/OFF button
2	MODE button
3	+/- button
4	FAN button
5	SWING button
6	SLEEP button
7	TIMER button

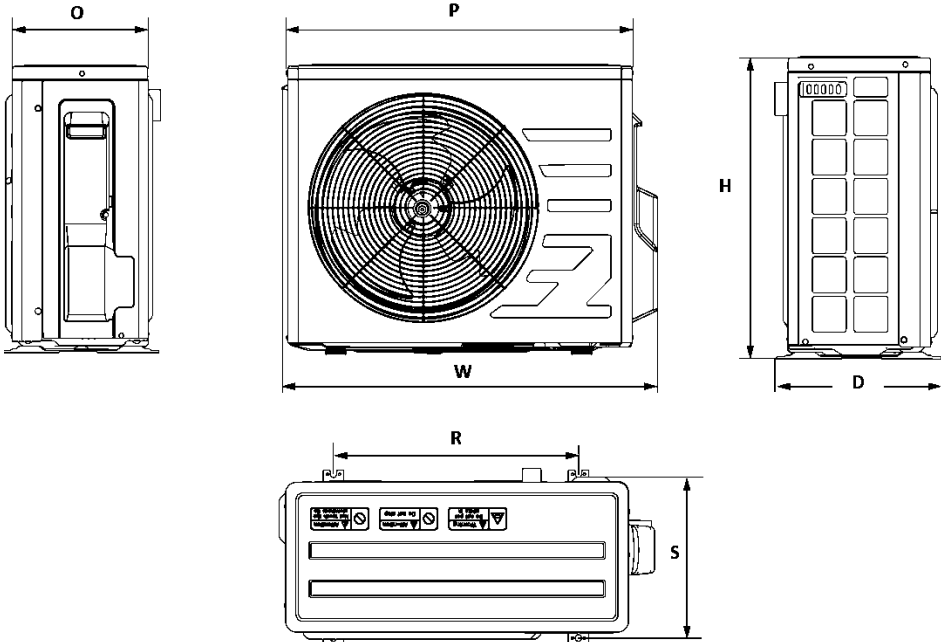
Icon Display on Remote Controller



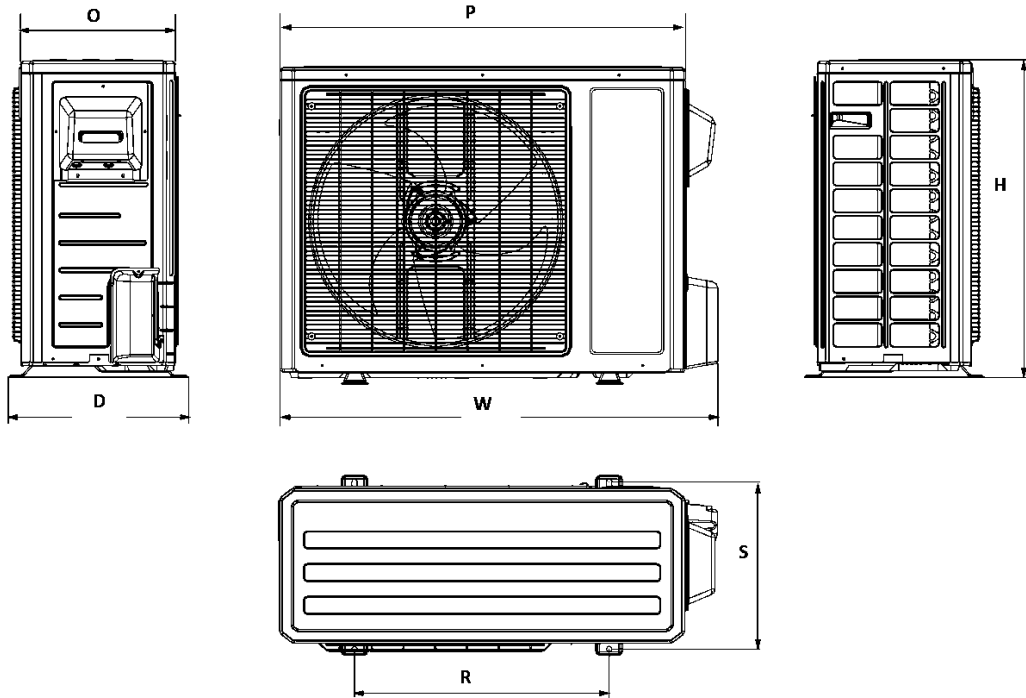
Summary, Features, and Construction Views

Outdoor Unit

ACZCI4H4R09 & ACZCI4H4R12



ACZCI4H4R18 & ACZCI4H4R24



Unit: mm							
Model	W	H	D	O	P	R	S
ACZCI4H4R09 ACZCI4H4R12	711.2	550.3	317.5	274.3	657.6	469.9	299.7
ACZCI4H4R18 ACZCI4H4R24	955.0	701.0	396.2	340.4	889.0	558.8	368.3
Unit: Inches							
ACZCI4H4R09 ACZCI4H4R12	28	21 2/3	12.5	10 4/5	25 8/9	18.5	11 4/5
ACZCI4H4R18 ACZCI4H4R24	37 3/5	27 3/5	15 3/5	13 2/5	35	22	14.5

\*True dimensions in inches

## Specifications

### Specifications

#### 9000 and 12000 BTU units

Parameter		Unit	Value		
Model			ACZEM4H4R09/ACZCI4H4R09	ACZEM4H4R12/ACZCI4H4R12	
Product Code			CB162008200_L14385	CB162008100_L14385	
Power Supply	Rated Voltage	V~	208/230	208/230	
	Rated Frequency	Hz	60	60	
	Phases		1	1	
Power Supply Mode			Outdoor	Outdoor	
Cooling Capacity (Min~Max)		Btu/h	9000(5000~11300)	12000(5300~12500)	
Heating Capacity (Min~Max)		Btu/h	9550(5300~12000)	13000(5500~13500)	
Cooling Power Input		W	950(375~1300)	1300(550~1350)	
Heating Power Input		W	800(300~1350)	1250(500~1500)	
Cooling Current Input		A	4.0	6.0	
Heating Current Input		A	3.5	5.5	
Rated Input		W	1800	1800	
Rated Current		A	9.0	9.0	
Air Flow Volume (SH/H/M/L/SL)		CFM	306/277/253/218/-	335/277/253/218/-	
		m <sup>3</sup> /h	520/470/430/370	569/470/430/370/-	
Dehumidifying Volume		Pint/h	1.69	2.96	
		L/h	0.8	1.4	
EER		Btu/Wh	9.47	9.23	
COP		Btu/Wh	11.94	10.04	
SEER			15	15	
HSPF			8.5	8.5	
Application Area		ft <sup>2</sup>	130-194	172-258	
		m <sup>2</sup>	12-18	16-24	
Indoor Unit	Indoor Unit Model		ACZEM4H4R09	ACZEM4H4R12	
	Indoor Unit Product Code		CB162N08200_L14385	CB162N08100_L14385	
	Fan Type		Cross-flow	Cross-flow	
	Fan Diameter Length (DXL)	inch		Φ3 5/8 X 25 2/5	Φ3 5/8 X 25 2/5
		mm		92 X 645	92 X 645
	Cooling Speed (SH/H/M/L/SL)	r/min		1260/1100/950/750/-	1330/1100/950/750/-
	Heating Speed (SH/H/M/L/SL)	r/min		1320/1200/1100/950/-	1350/1170/1050/950/-
	Fan Motor Power Output	W		20	20
	Fan Motor RLA	A		0.20	0.2
	Fan Motor Capacitor	μF		1	1
	Evaporator Form			Aluminum Fin-copper tube	Aluminum Fin-copper tube
	Inch		Φ2/7	Φ2/7	

	Evaporator Pipe Diameter	mm	Φ7.26	Φ7.26
	Evaporator Row-fin Gap	Inch	2-1/18	2-1/18
		mm	50.8-1.41	50.8-1.41
	Evaporator Coil Length (LXDXW)	Inch	25 2/5X1X10.5	25 2/5X1X10.5
		mm	645X25.4X267	645X25.4X267
	Swing Motor Model		MP24AA	MP24AA
	Swing Motor Power Output	W	2	2
	Fuse Current	A	3.15	3.15
	Sound Pressure Level (SH/H/M/L/SL)	dB(A)	43/40/37/34/-	44/42/39/36/-
	Sound Power Level (SH/H/M/L/SL)	dB(A)	53/50/47/44/-	54/52/49/46/-
	Dimension (WXHXD)	inch	33.25X10 5/6X7	33.25X10 5/6X7
		mm	844X275X178	844X275X178
	Dimension of Carton Box (LXWXH)	inch	36X10X14	36X10X14
		mm	914X254X356	914X254X356
	Dimension of Package (LXWXH)	Inch	36 1/7X10 1/6X14 4/7	36 1/7X10 1/6X14 4/7
		mm	918X258X370	918X258X370
	Net Weight	lb	19.8	20.9
		kg	8.98	9.5
	Gross Weight	lb	26.5	27.6
		kg	12	12.5
Outdoor Unit	Outdoor Unit Model		ACZCI4H4R09	ACZCI4H4R12
	Outdoor Unit Product Code		CB145W04400_L14385	CB145W04600_L14385
	Compressor Manufacturer		ZHUHAI LANDA COMPRESSOR CO., LTD	ZHUHAI LANDA COMPRESSOR CO., LTD
	Compressor Model		QXA-A091ZE190A	QXA-A091ZE190A
	Compressor Oil		FVC 68D or RB 68EP	FVC 68D or RB 68EP
	Compressor Type		Rotary	Rotary
	L.R.A.	A	/	/
	Compressor RLA	A	7.30	7.30
	Compressor Power Input	W	942	942
	Compressor Overload Protector		1NT11L-6233HPC115/95U1 KSD115°C	1NT11L-6233HPC115/95U1 KSD115°C
	Throttling Method		Capillary	Capillary
	Set Temperature Range	°F	61~86	61~86
		°C	16~30	16~30
	Ambient Temperature (Cooling)	°F	64~109	64~109
		°C	18~42	18~42
Ambient Temperature (Heating)	°F	19~75	19~75	
	°C	-7~24	-7~24	

	Condenser Form		Aluminum fin-copper tube	Aluminum fin-copper tube
	Condenser Pipe diameter	mm	Φ7.25	Φ7.25
		in	Φ2/7	Φ2/7
	Condenser Rows-fin gap	mm	25.4-1.4	50.8-1.4
		in	1-1/18	2-1/18
	Condenser Coil Length (LXD <sub>X</sub> W)	mm	648X19X528	648X38.1X528
		in	25 ½ X ¾ X20 4/5	25 ½ X 1 ½ X20 4/5
	Fan Motor Speed	RPM	880	880
	Output of Fan Motor	W	21	21
	Fan Motor RLA	A	0.25	0.25
	Fan Motor Capacitor	μF	2	2
	Air Flow Volume of Outdoor Unit	m <sup>3</sup> /h	1600	1600
		CFM	942	942
	Fan Type		Axial Flow	Axial Flow
	Fan Diameter	mm	Φ370.84	Φ370.84
		in	Φ14 3/5	Φ14 3/5
	Defrosting Method		Automatic Defrosting	Automatic Defrosting
	Climate Type		T1	T1
	Isolation		I	I
	Moisture Protection		IP24	IP24
	Permissible Excessive Operating Pressure for the Discharge Side	MPa	4.3	4.3
		PSI	624	624
	Permissible Excessive Operating Pressure for the Discharge Side	MPa	2.5	2.5
		PSI	363	363
	Sound Pressure Level (H/M/L)	dB(A)	52/-/-	53/-/-
	Sound Power Level (H/M/L)	dB(A)	62/-/-	63/-/-
	Dimension (WXH <sub>X</sub> D)	mm	711.2X550X317.5	711.2X550X317.5
		in	28 X 21 2/3 X 12 ½	28 X 21 2/3 X 12 ½
	Dimension of Carton Box (L/W/H)	mm	770.5X348.3X592.7	770.5X348.3X592.7
		in	30 1/3 X13 5/7 X 23 1/3	30 1/3 X13 5/7 X 23 1/3
	Dimension of Package (L/W/H)	mm	774.7X351.4X606.8	774.7X351.4X606.8
		in	30 ½ X 13 5/6 X 23 8/9	30 ½ X 13 5/6 X 23 8/9
	Net Weight	kg	28	30
		Lbs	61.7	66.2
	Gross Weight	kg	30	32
		Lbs	66.2	70.6
	Refrigerant		R410A	R410A
	Refrigerant Charge	grams	740	1000
		oz	26.1	35.3
	Electric Breaker		2-Pole 20Amps	2-Pole 20Amps
Connection Pipe	Length	m	7.5	7.5
		ft	24.6	24.6
	Gas Additional Charge	g/m	18.6	18.6

		oz/ft	0.2	0.2
Outer Diameter Liquid Pipe		mm	6.35	6.35
		in	¼	¼
Outer Diameter Gas Pipe		mm	9.53	9.53
		in	3/8	3/8
Max Distance Height		m	10	10
		ft	32.8	32.8
Max Distance Length		m	15	20
		ft	49.2	65.6
Note: The connection pipe applies metric diameter.				

### 18000 and 24000 BTU units

Parameter	Unit	Value		
Model		ACZEM4H4R18/ACZCI4H4 R18	ACZEM4H4R24/ACZCI4H4 R24	
Product Code		CB162008000_L14385	CB162007900_L14385	
Power Supply	Rated Voltage	V~	208/230	
	Rated Frequency	Hz	60	
	Phases		1	
Power Supply Mode		Outdoor	Outdoor	
Cooling Capacity (Min~Max)	Btu/h	18000(2201~20001)	22000(8630~23200)	
Heating Capacity (Min~Max)	Btu/h	19000(3050~23500)	23000(8650~26000)	
Cooling Power Input	W	1950(350~2560)	2310(600~2700)	
Heating Power Input	W	1730(310~2600)	2300(610~2750)	
Cooling Current Input	A	8.65	10.25	
Heating Current Input	A	7.52	10.20	
Rated Input	W	2600	2750	
Rated Current	A	11.54	12.20	
Air Flow Volume (SH/H/M/L/SL)	CFM	860/780/650/550	1000/800/700/600	
	m <sup>3</sup> /h	1460/1325/1100/935	1700/1360/1190/1020	
Dehumidifying Volume	Pint/h	3.80	5.28	
	L/h	1.80	2.50	
EER	Btu/Wh	8.5	9.52	
COP	Btu/Wh	10.23	10	
SEER		15	15	
SCOP		9	8.5	
Application Area	ft <sup>2</sup>	247.5-366	290.6-452.25	
	m <sup>2</sup>	23-34	27-42	
Indoor Unit	Indoor Unit Model		ACZEM4H4R18	
	Indoor Unit Product Code		CB162N08000_L14385	
	Fan Type		Cross-flow	
	Fan Diameter Length (DXL)	inch	Φ3 6/7X28	Φ3 6/7X30 1/8
		mm	Φ98X711	Φ98X765
Cooling Speed (SH/H/M/L/SL)	r/min	1500/1200/1050/900	1500/1200/1050/900	

	Heating Speed (SH/H/M/L/SL)	r/min	1500/1250/1150/1050	1450/1150/1020/950
	Fan Motor Power Output	W	20	60
	Fan Motor RLA	A	0.32	0.24
	Fan Motor Capacitor	μF	1.5	/
	Evaporator Form		Aluminum Fin-copper tube	Aluminum Fin-copper tube
	Evaporator Pipe Diameter	Inch	Φ2/7	Φ2/7
		mm	Φ 7.3	Φ 7.3
	Evaporator Row-fin Gap	Inch	2-3/50	2-3/50
		mm	50.8-1.524	50.8-1.524
	Evaporator Coil Length (LXD <sub>X</sub> W)	Inch	28 1/7X1X12	28 1/7X1X12
		mm	715X25.4X305	715X25.4X305
	Swing Motor Model		MP28VB	MP35XX
	Swing Motor Power Output	W	2	3
	Fuse Current	A	3.15	3.15
	Sound Pressure Level (SH/H/M/L/SL)	dB(A)	48/42/39/36	52/46/42/36
	Sound Power Level (SH/H/M/L/SL)	dB(A)	58/52/49/46	62/56/52/46
	Dimension (WXHXD)	inch	37X11 2/3 X8	39 5/7 X 12 2/5 X 8 3/5
		mm	940X296X203	1008X315X218.4
	Dimension of Carton Box (LXWXH)	inch	39 4/5X15X11 1/5	42 1/5X15 3/5X 12 1/3
		mm	1011X381X284	1072X396X313
	Dimension of Package (LXWXH)	Inch	39 8/9 X15X11 4/5	42 2/5X 15 3/5X 13
		mm	1013X381X300	1077X396X330
	Net Weight	lb	26.46	33.1
		kg	12	15
	Gross Weight	lb	33.07	40.79
		kg	15	18.5
Outdoor Unit	Outdoor Unit Model		ACZCI4H4R18	ACZCI4H4R24
	Outdoor Unit Product Code		CB145W04200_L14385	CB145W04000_L14385
	Compressor Manufacturer		ZHUHAI LANDA COMPRESSOR CO., LTD	ZHUHAI LANDA COMPRESSOR CO., LTD
	Compressor Model		QXA-B141ZF030A	QXA-B141ZF030A
	Compressor Oil		68EP	68EP
	Compressor Type		Rotary	Rotary
	L.R.A.	A	25	25
	Compressor RLA	A	9.7	7.2
	Compressor Power Input	W	1440	1440

Compressor Overload Protector		1NT11L-6233	1NT11L-6233
Throttling Method		Capillary	Capillary
Set Temperature Range	°F	60.8~86.0	60.8~86.0
	°C	16~30	16~30
Ambient Temp. (Cooling)	°F	64.4~109.4	64.4~109
	°C	18~43	18~43
Ambient Temp. (Heating)	°F	19.4~75.2	19.4~75.2
	°C	-7~24	-7~24
Condenser Form		Aluminum Fin-Copper Tube	Aluminum Fin-Copper Tube
Condenser Pipe diameter	mm	Φ 9.53	Φ 9.53
	in	Φ3/8	Φ3/8
Condenser Rows-fin gap	mm	25.4-1.524	50.8-1.524
	in	1-3/50	2-3/50
Condenser Coil Length (LXD <sub>X</sub> W)	mm	853X22.6X660	845X42X660
	in	33 3/5X 8/9 X26	33 2/7 X 1 2/3 X 26
Fan Motor Speed	RPM	450/800	450/800
Output of Fan Motor	W	60	60
Fan Motor RLA	A	0.37	0.37
Fan Motor Capacitor	μF	/	/
Air Flow Volume of Outdoor Unit	m <sup>3</sup> /h	3200	3200
	CFM	1883	1883
Fan Type		Axial-flow	Axial-flow
Fan Diameter	mm	Φ520.7	Φ520.7
	in	Φ20.5	Φ20.5
Defrosting Method		Automatic Defrosting	Automatic Defrosting
Climate Type		T1	T1
Isolation		I	I
Moisture Protection		IP24	IP24
Permissible Discharge Pressure	MPa	3.80	3.80
	PSIG	550	550
Permissible Suction Pressure	MPa	1.65	1.65
	PSIG	240	240
Sound Pressure Level (H/M/L)	dB(A)	56/-/-	59/-/-
Sound Power Level (H/M/L)	dB(A)	66/-/-	69/-/-
Dimension (WXHXD)	mm	955X701X396	955X701X396
	in	37 3/5 X27 3/5 X15 3/5	37 3/5 X27 3/5 X15 3/5
Dimension of Carton Box (L/W/H)	mm	1026X454X734	1026X454X734
	in	40 2/5 X 17 8/9 X 28 8/9	40 2/5 X 17 8/9 X 28 8/9
Dimension of Package (L/W/H)	mm	1028.7X457.2X749.3	1028.7X457.2X749.3
	in	40.5X18X29.5	40.5X18X29.5

	Net Weight	kg	46	52
		Lbs	101.4	114.7
	Gross Weight	kg	50.5	56.5
		Lbs	111.3	124.6
	Refrigerant		R410A	R410A
	Refrigerant Charge	grams	1800	1850
oz		63.5	65.3	
Electric Breaker		2-Pole 25Amps	2-Pole 25Amps	
Connection Pipe	Length	m	7.5	7.5
		ft	24.6	24.6
	Gas Additional Charge	g/m	28	28
		oz/ft	0.3	0.3
	Outer Diameter Liquid Pipe	mm	Φ6.35	Φ6.35
		in	Φ1/4	Φ1/4
	Outer Diameter Gas Pipe	mm	Φ 12.7	Φ15.875
		in	Φ1/2	Φ5/8
	Max Distance Height	m	10	10
		ft	32.8	32.8
Max Distance Length	m	25	25	
	ft	82	82	

Note: The connection pipe applies metric diameter.

### **AHRI Certifications and SEER Rating**

<b>AHRI Certification Reference Number</b>	<b>Date</b>	<b>Rated Capacity (Btu/h)</b>	<b>SEER (Cooling) Btu/Wh</b>	<b>EER (Cooling) Btu/Wh</b>	<b>Indoor unit model</b>	<b>Outdoor unit model</b>
7064560	1/13/16	9000	15.00	9.50	ACZEM4H4R09	ACZCI4H4R09
7064561	1/13/16	12000	15.00	9.00	ACZEM4H4R12	ACZCI4H4R12
7064562	1/13/16	18000	15.00	8.00	ACZEM4H4R18	ACZCI4H4R18
7064563	1/13/16	22000	15.00	9.50	ACZEM4H4R24	ACZCI4H4R24